

**VENTURA COUNTY LCP
CATEGORICAL EXCLUSIONS**

FOR: SINGLE-FAMILY RESIDENTIAL DWELLINGS

AREAS: See attached maps and Section 8192-2.2 of the coastal zoning ordinance.



Boundary of exclusion areas for the construction of single-family dwellings.



Statutory Non-excludable Areas (pursuant to section 30610.5(b) of the Coastal Act)

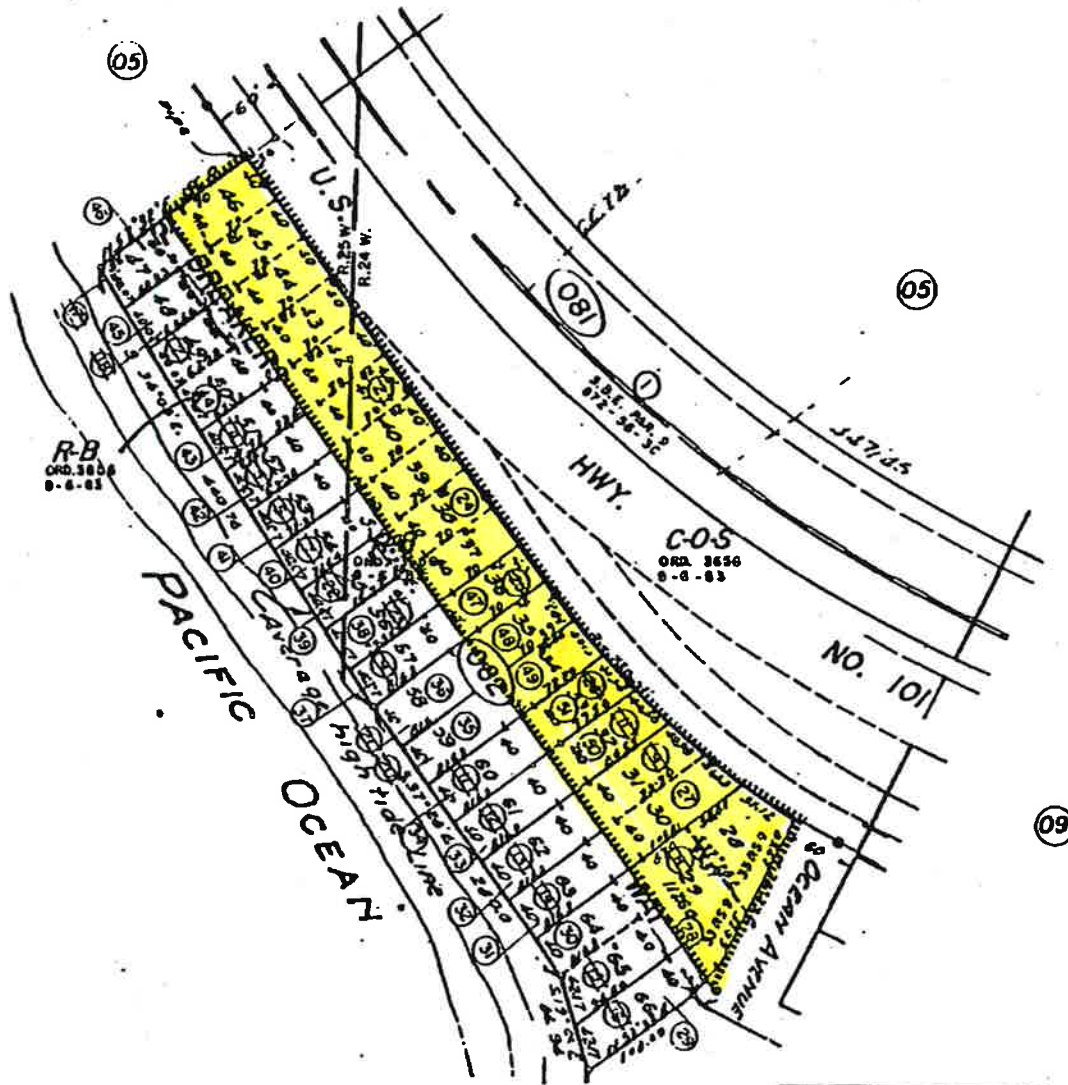
NOTE: Please refer to Attachment "1" of this Resolution and Section 8192-2 for a complete list of areas and developments which are non-excludable, and must obtain a permit as provided for in the LCP zoning ordinance. In general, no development within one hundred feet of the upland limit of any stream, marsh, wetland, estuary, or lake is excluded from the permit requirements of the LCP zoning ordinance regardless of whether such waters are depicted on the exclusion maps. Additionally, if any LCP policies or maps specify an area of concern for natural resources or environmentally sensitive habitats, no development within those areas is categorically excluded.

POR. SEC. 12, T. 3 N., R. 25 W. S.B.B. & M.
 POR. SEC. 7, T. 3 N., R. 24 W. S.B.B. & M.

Tax Rate Area
 91008

61-61
 60-08

SEP 6 1963



VENTURA COUNTY PLANNING DEPARTMENT	
ZONE BOUNDARY	ZONING MAP 60-08
BOARD OF SUPERVISORS COUNTY OF VENTURA	
ORDINANCE 3664	ADOPTED 8-6-63
COUNTY CLERK	Robert L. Hixon
By <i>Sage Hillard</i>	Deputy

Mussel Shoal Tr. 1, R.M. Bk. 12, Pg. 30

NOTE: SOME PARCELS SHOWN ON THIS PAGE DO NOT MEET STATE REQUIREMENTS FOR CONVEYANCE AND CAN BE CONVEYED TO THE COUNTY CLERK'S OFFICE ON AN ASSASSIN'S DEED TO US ONLY.

NOTE- Assessor's Block Numbers Shown in Ellipses
 Assessor's Parcel Numbers Shown in Circles
 Assessor's Mineral Numbers Shown in Squares

Assessor's Map Bk. 60, Pg. 08
 County of Ventura, Calif.

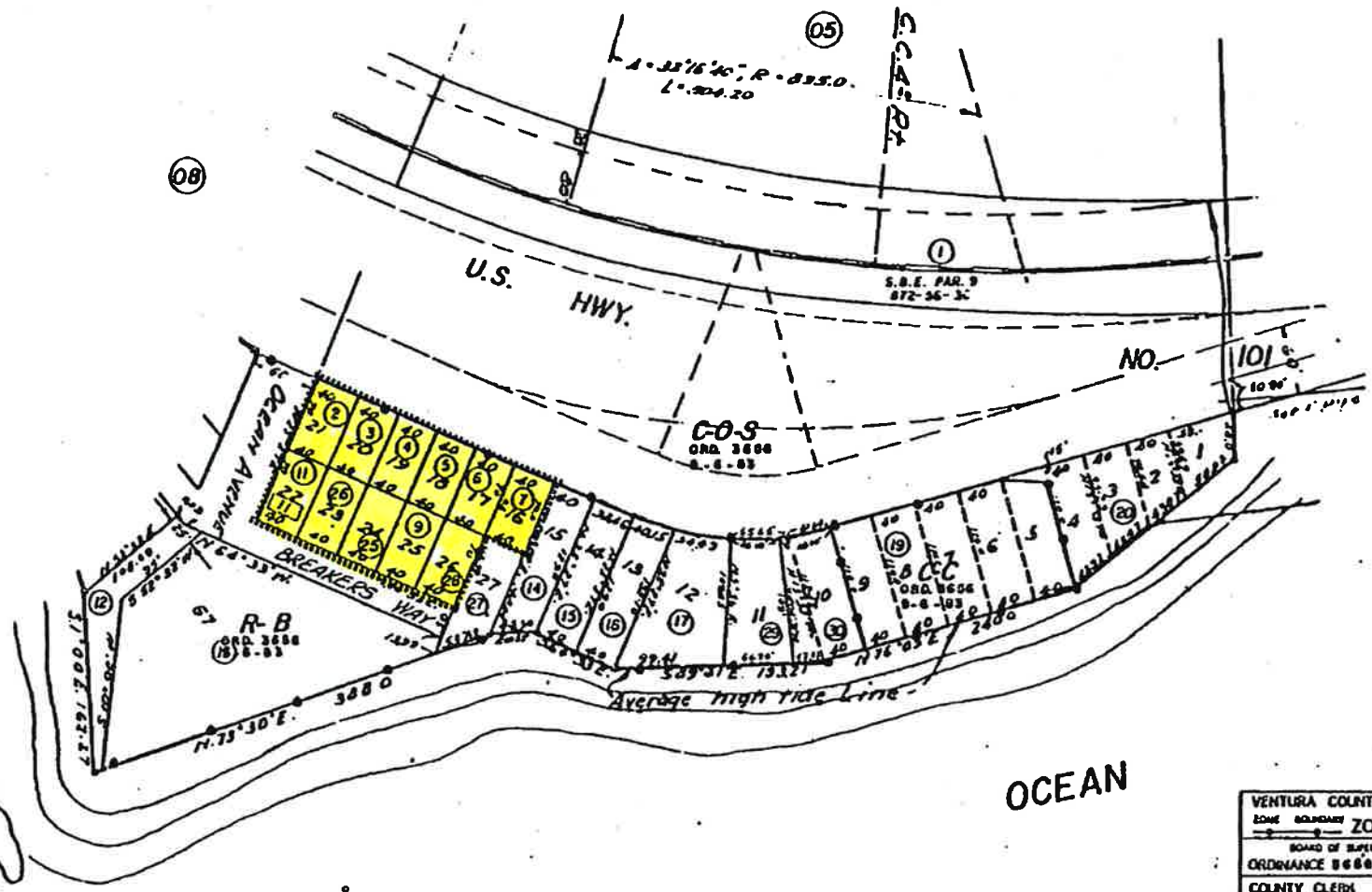
POR. SEC. 7, T. 3 N., R. 24 W. S.B.B. & M.

Tax Rate Area
91008

60-09
Str 5 141



(03)



Mussel Shoal
Rock

PACIFIC

OCEAN

Mussel Shoal Tr. 1, R.M. Bk. 12, Pg. 30

VENTURA COUNTY PLANNING DEPARTMENT	
EDMUND BOLDFORTH ZONING MAP 60-09	
BOARD OF SUPERVISORS COUNTY OF VENTURA	
ORDINANCE 8688 ADOPTED 8-8-88	
COUNTY CLERK	Robert L. Harlan
By <i>Jayne Hillard</i> Deputy	

NOTE: ALL ALIEN PRICES & INTERESTS PAID DO NOT NECESSARILY CONSTITUTE A LEGAL LOT. CANNOT BE USED TO DIVIDE OR SUBDIVIDE OR IN ANY MANNER TO VARY.

NOTE - Assessor's Block Numbers Shown in Ellipses
Assessor's Parcel Numbers Shown in Circles
Assessor's Mineral Numbers Shown in Squares

Assessor's Map Bk. 60, Pg. 09
County of Ventura, Calif

RANCHO SAN MIGUELITO

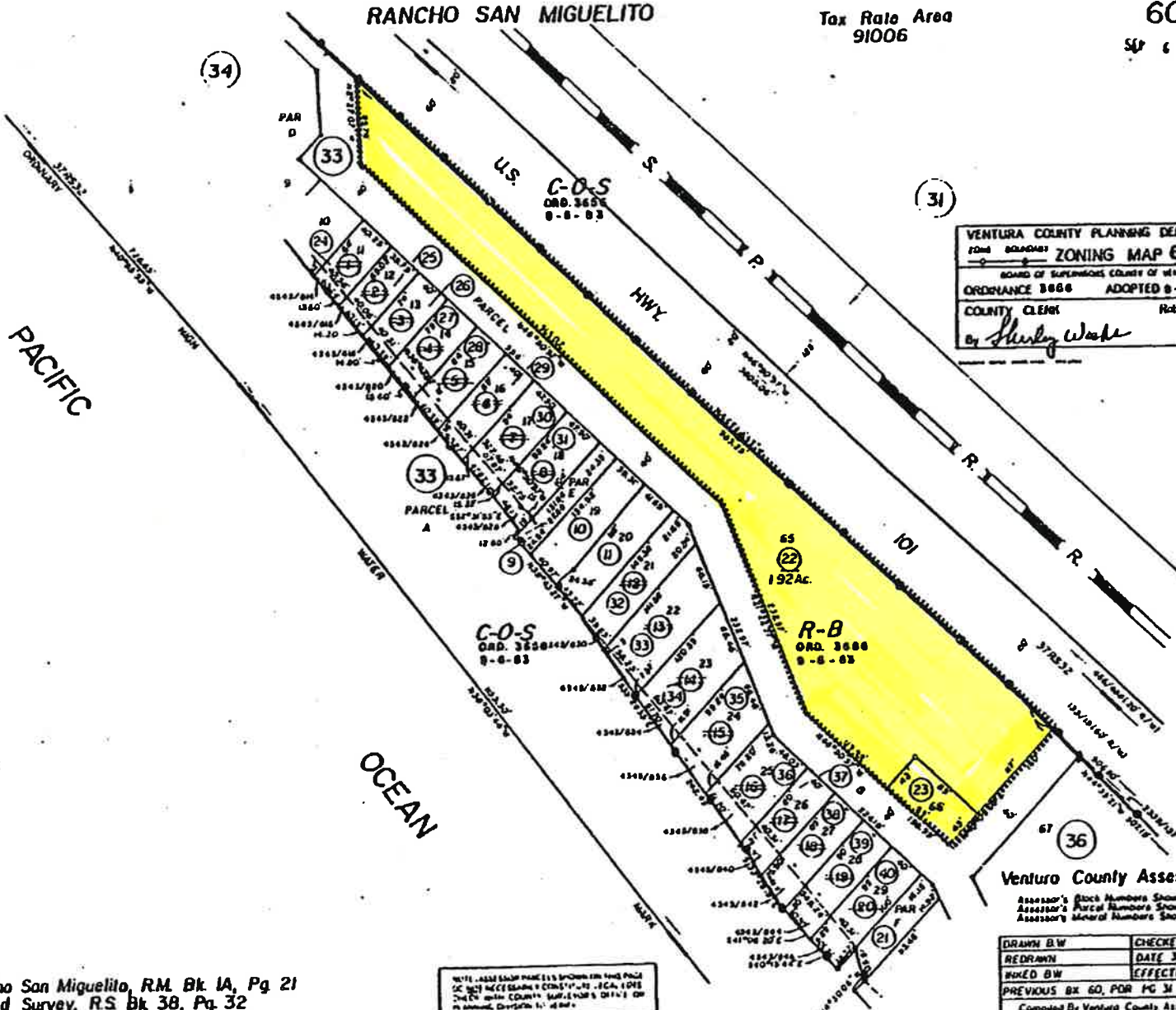
Tax Rate Area
91006

60-35

SW 6 1/4



VENTURA COUNTY PLANNING DEPARTMENT	
ZONING MAP 60-35	
BOARD OF SUPERVISORS COUNTY OF VENTURA	
ORDINANCE 1866	ADOPTED 9-8-83
COUNTY CLERK	Robert L. Harris
By <i>Shirley Wake</i> Deputy	



PACIFIC

OCEAN

NOTE: ALL PARCELS SHOWN ON THIS PAGE
 ARE SUBJECT TO THE COUNTY'S GENERAL PLAN
 AND THE COUNTY'S ZONING ORDINANCES
 AS AMENDED, DIVISION 11, ARTICLE 1

Ventura County Assessor's Map.

Assessor's Block Numbers Shown in Ellipses
 Assessor's Parcel Numbers Shown in Circles
 Assessor's Acreal Numbers Shown in Squares

DRAWN BY	CHECKED BY
REDRAWN	DATE
WORKED BY	EFFECTIVE
PREVIOUS BK 60, POR PG 31	

Computed By Ventura County Assessor's Office

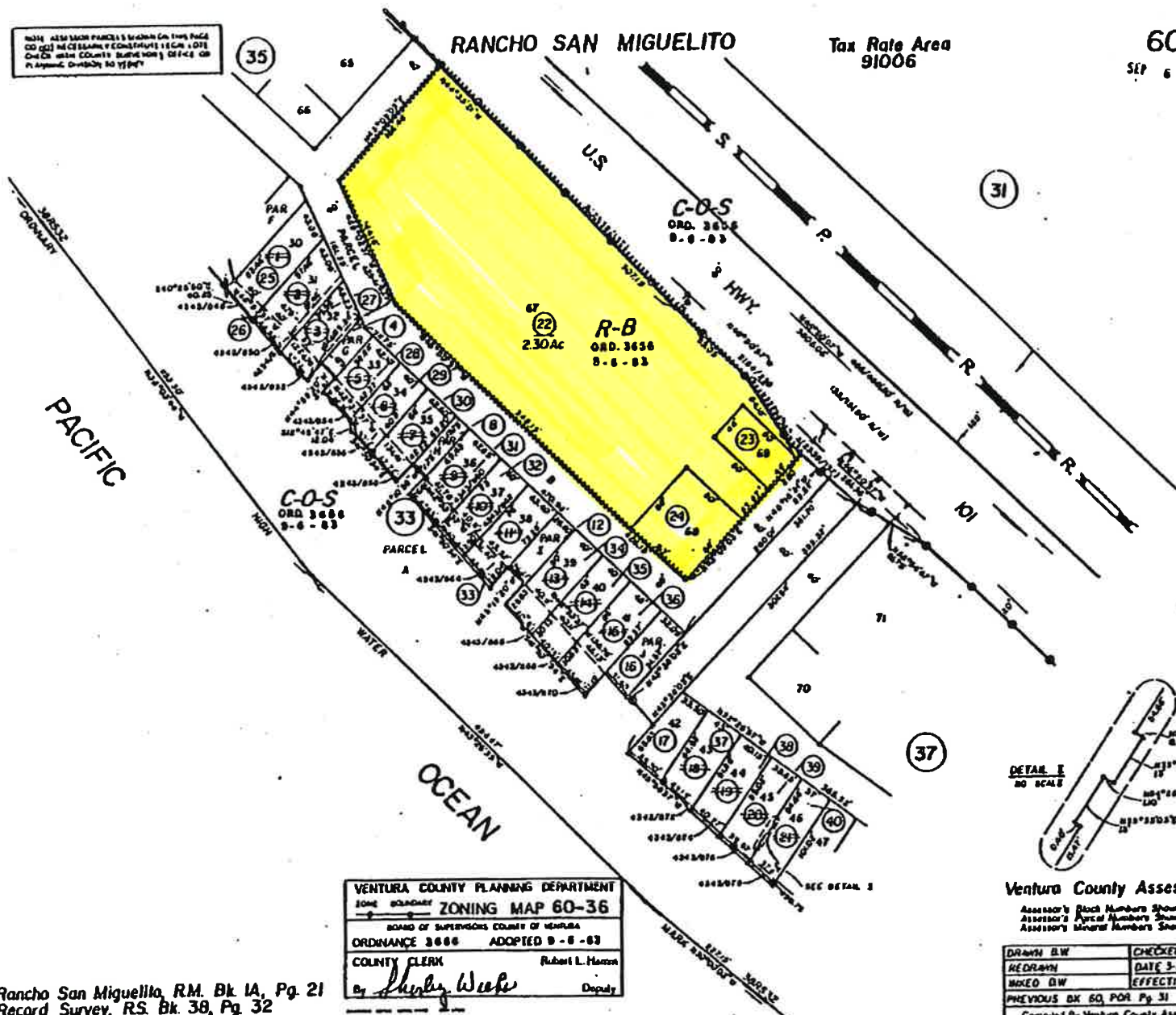
Rancho San Miguelito, R.M. Bk 1A, Pg 21
 Record Survey, R.S. Bk 38, Pg 32

60-1011

NOTE: ALSO SHOW PARCELS & BOUNDARIES ON THIS PAGE OR (C) NECESSARY CONSTITUTE LEGAL LOTS OR (D) WITH COUNTY SUPERVISOR'S OFFICE OR PLANNING DEPARTMENT TO VERIFY

RANCHO SAN MIGUELITO

Tax Rate Area 91006



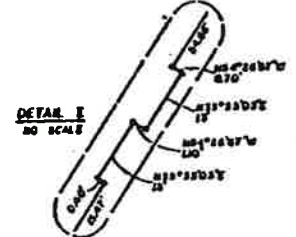
60-TOT1

PACIFIC OCEAN

OCEAN

VENTURA COUNTY PLANNING DEPARTMENT
 ZONING MAP 60-36
 BOARD OF SUPERVISORS COUNTY OF VENTURA
 ORDINANCE 3686 ADOPTED 9-6-83
 COUNTY CLERK Robert L. Mason
 By *Shirley Webb* Deputy

Rancho San Miguelito, R.M. Bk. 1A, Pg. 21
Record Survey, R.S. Bk. 38, Pg. 32



Ventura County Assessor's Map.

Assessor's Block Numbers Shown by Ellipse
Assessor's Parcel Numbers Shown in Circles
Assessor's Mineral Numbers Shown in Squares

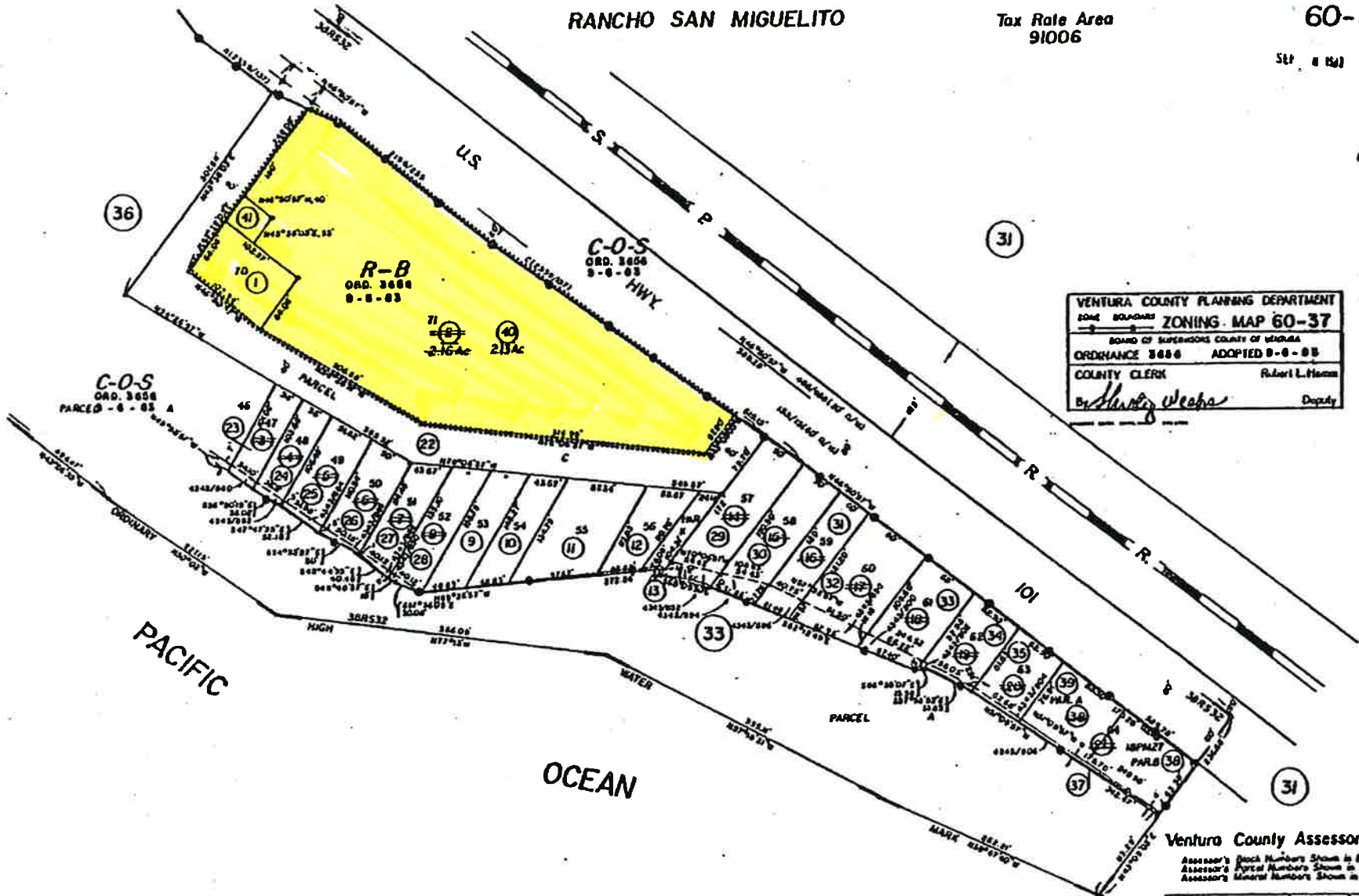
DRAWN BY	CHECKED BY
REDRAWN	DATE 3-15-79
MADE BY	EFFECTIVE 11-75, ROLL
PREVIOUS BK 60, P. 31	
Compiled By Ventura County Assessor's Office	

RANCHO SAN MIGUELITO

Tax Rate Area
91006

60-37

50' = 1" (1:50)



VENTURA COUNTY PLANNING DEPARTMENT
 ZONING MAP 60-37
 BOARD OF SUPERIORS COUNTY OF VENTURA
 ORDINANCE 3688 ADOPTED 9-8-83
 COUNTY CLERK Robert L. Mason
 Deputy *Henry Wechs*

Rancho San Miguelito, R.M. Bk. 1A, Pg. 21
 Record Survey, R.S. Bk. 38, Pg. 32

Ventura County Assessor's Map
 Assessor's Block Numbers Shown in Ellipse
 Assessor's Parcel Numbers Shown in Circles
 Assessor's Minor Numbers Shown in Squares

DRAWN BY	CHECKED BY AT
REDRAWN	DATE 3-13-78
INDEXED BY	EFFECTIVE 2-1-78 ROLL
PREVIOUS BK 60, FOR PG 31	
Compiled By Ventura County Assessor's Office	

NOTE: ALL 1600 PARCELS SHOWN ON THIS PAGE DO NOT NECESSARILY CONSTITUTE LEGAL LOTS OR CENSUS TRACTS. BLANKET DEEDS OR A. ANTICIP. DIVISION TO VERIFY

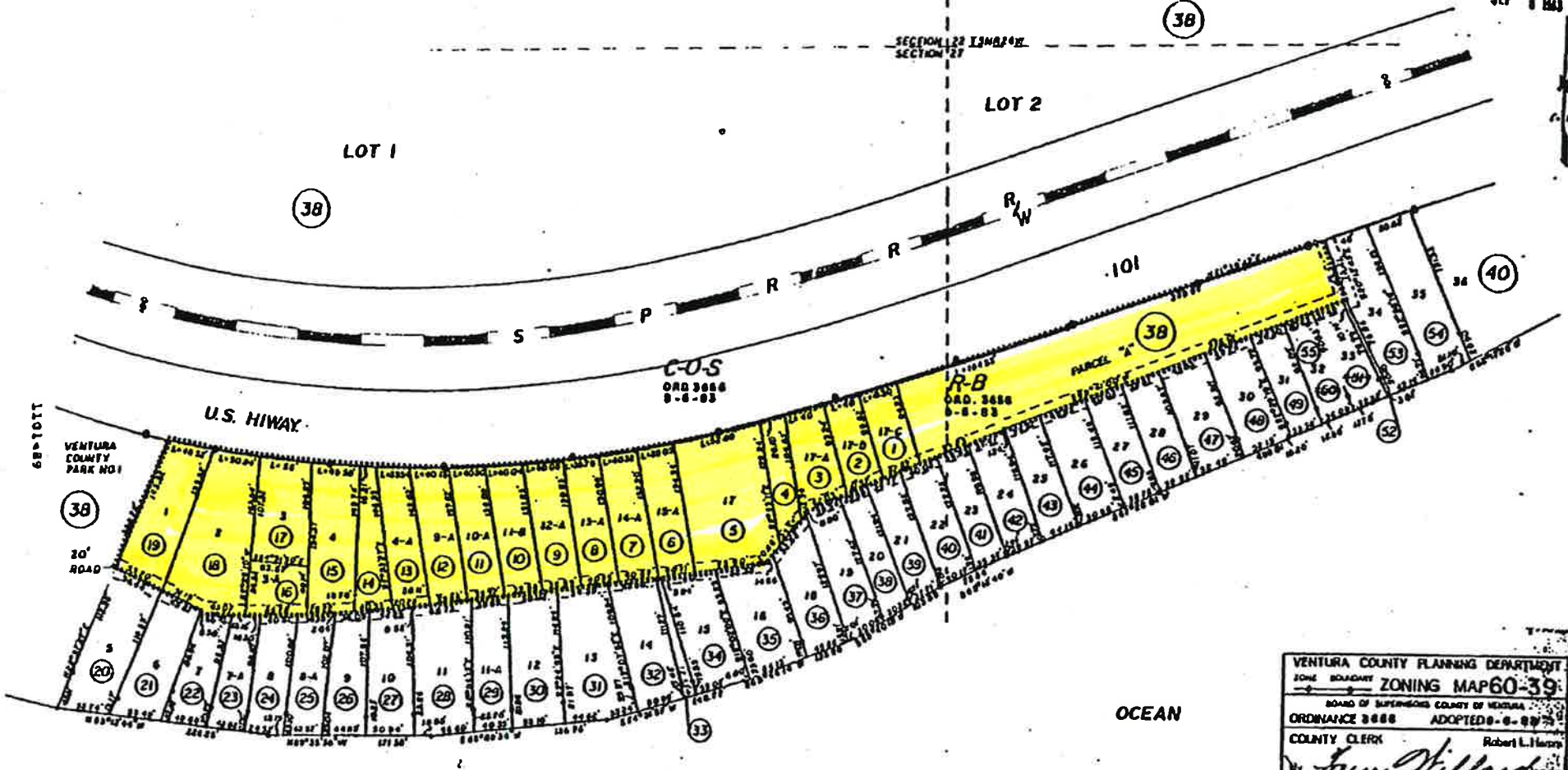
60-1011

PORTION SECTION 27, T.5N, R.24W

Tax Rate Area
91006

60-39⁰⁰⁻³⁹

SEP 8 1975



VENTURA COUNTY PLANNING DEPARTMENT
 ZONING MAP 60-39
 BOARD OF SUPERVISORS COUNTY OF VENTURA
 ORDINANCE 3888 ADOPTED 8-8-75
 COUNTY CLERK Robert L. Haines
Tracy Hillard

Venturo County Assessor's Map

Assessor's Block Numbers Shown in Circles
 Assessor's Parcel Numbers Shown in Circles
 Assessor's Acreal Numbers Shown in Squares

NOTE: NAME EACH PARCEL AS SHOWN ON THIS PAGE
 GO TO THE NEAREST COUNTY CLERK'S OFFICE TO
 OBTAIN THE COUNTY CLERK'S OFFICE OR
 PLANNING DIVISION TO VERIFY

DRAWN	CHECKED
REDRAWN BY	DATE 6-13-76
INKED	EFFECTIVE 02-02-76
PREVIOUS BK. 60, PDR. PG. 38	
Compiled By Ventura County Assessor's Office	

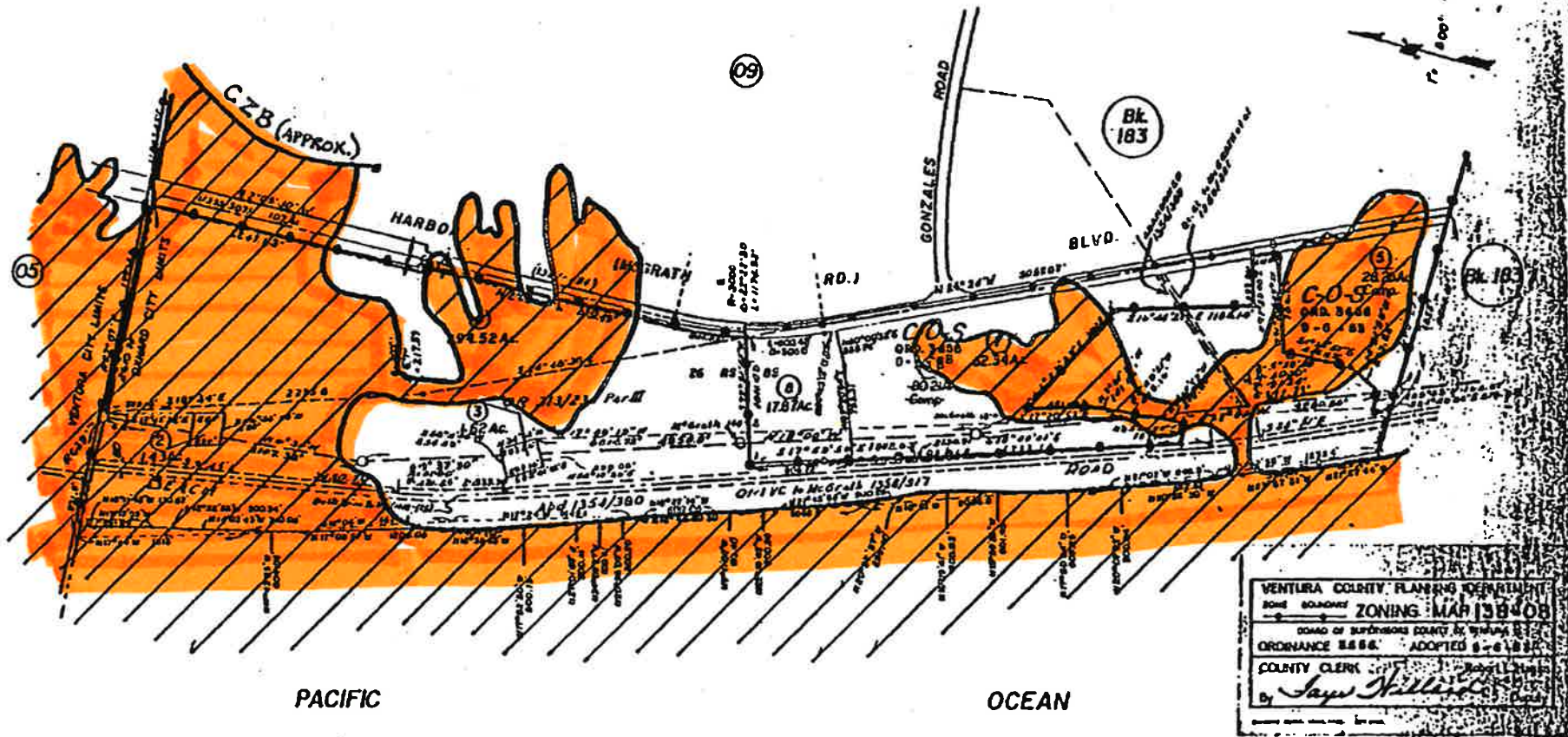
PACIFIC

Faria Beach, R.S. Bk. 36, Pg. 27

POR RANCHO COLONIA.

Tax Rate Area:
 03042
 73012
 03105

138-08
 SEP 6 1981



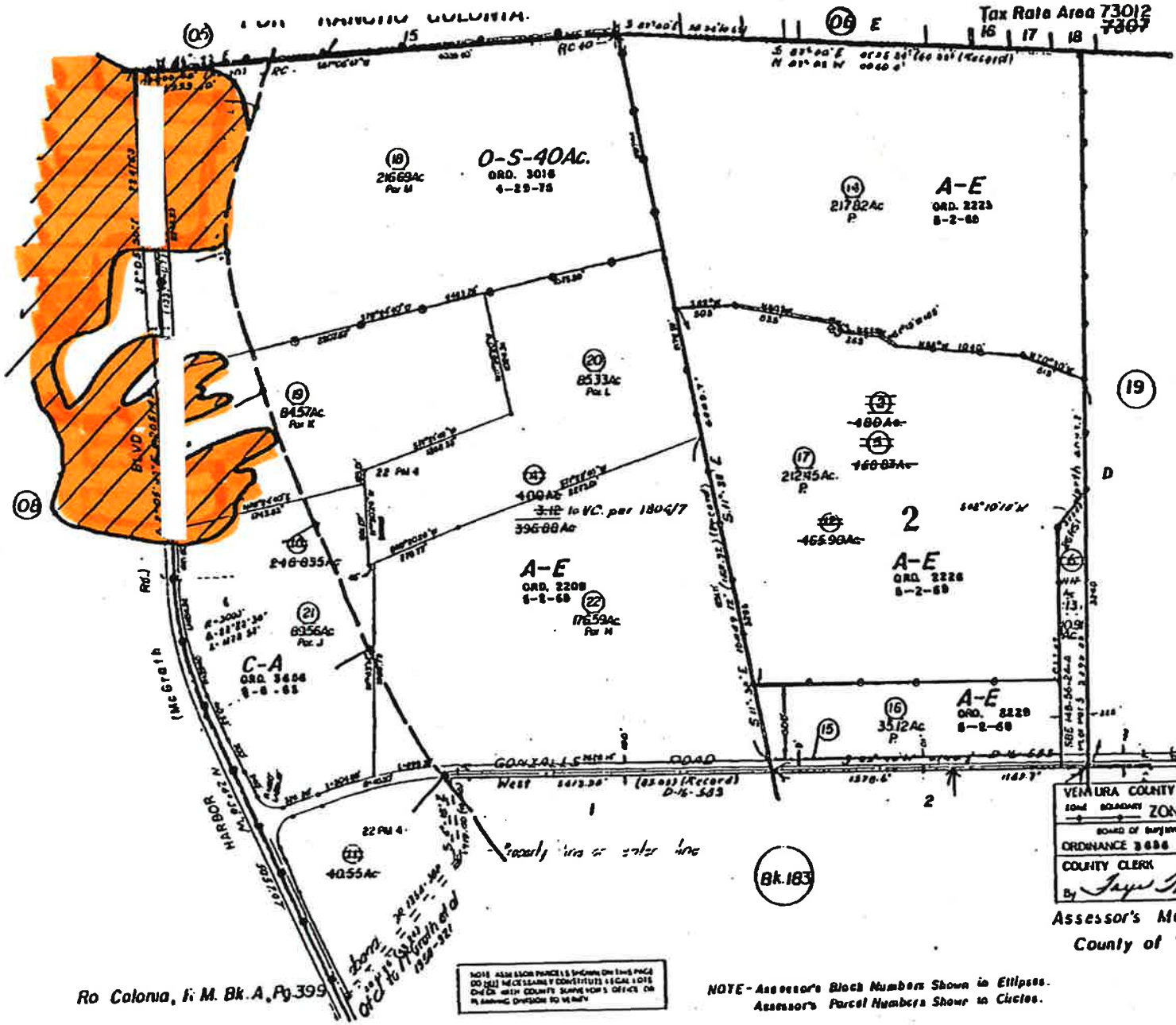
Ro Colonia, R.M. Bk A, Pg. 399

NOTE: ASSASSOR PARCELS SHOWN ON THIS PAGE
 DO NOT NECESSARILY CONSTITUTE LEGAL LOTS
 CHECK WITH COUNTY CLERK'S OFFICE OR
 PLANNING DIVISION FOR VERITY

NOTE - Assessor's Block Numbers Shown in Ellipses.
 Assessor's Parcel Numbers Shown in Circles.

CITY OF OXNARD
 & VICINITY
 Assessor's Map. Bk.138, Pg.08.
 County of Ventura, Calif

Tax Rate Area 73012
7367



VENTURA COUNTY PLANNING DEPARTMENT
 1044 BROADWAY ZONING MAP 138-09
 BOARD OF SUPERVISORS COUNTY OF VENTURA
 ORDINANCE 3686 ADOPTED 8-8-68
 COUNTY CLERK Robert L. Harro
 By *Jay Hillard* Deputy

Assessor's Map, Bk. 138, Pg. 09.
 County of Ventura, Calif.

Bk. 183

Ro Colonia, I. M. Bk. A, Pg. 399

NOTE - ALL PARCELS SHOWN ON THIS PAGE
 DO NOT NECESSARILY CONSTITUTE LEGAL LOTS
 OR EXACT COUNTY SUPERVISOR'S OFFICE OR
 PLANNING DIVISION TO VERIFY

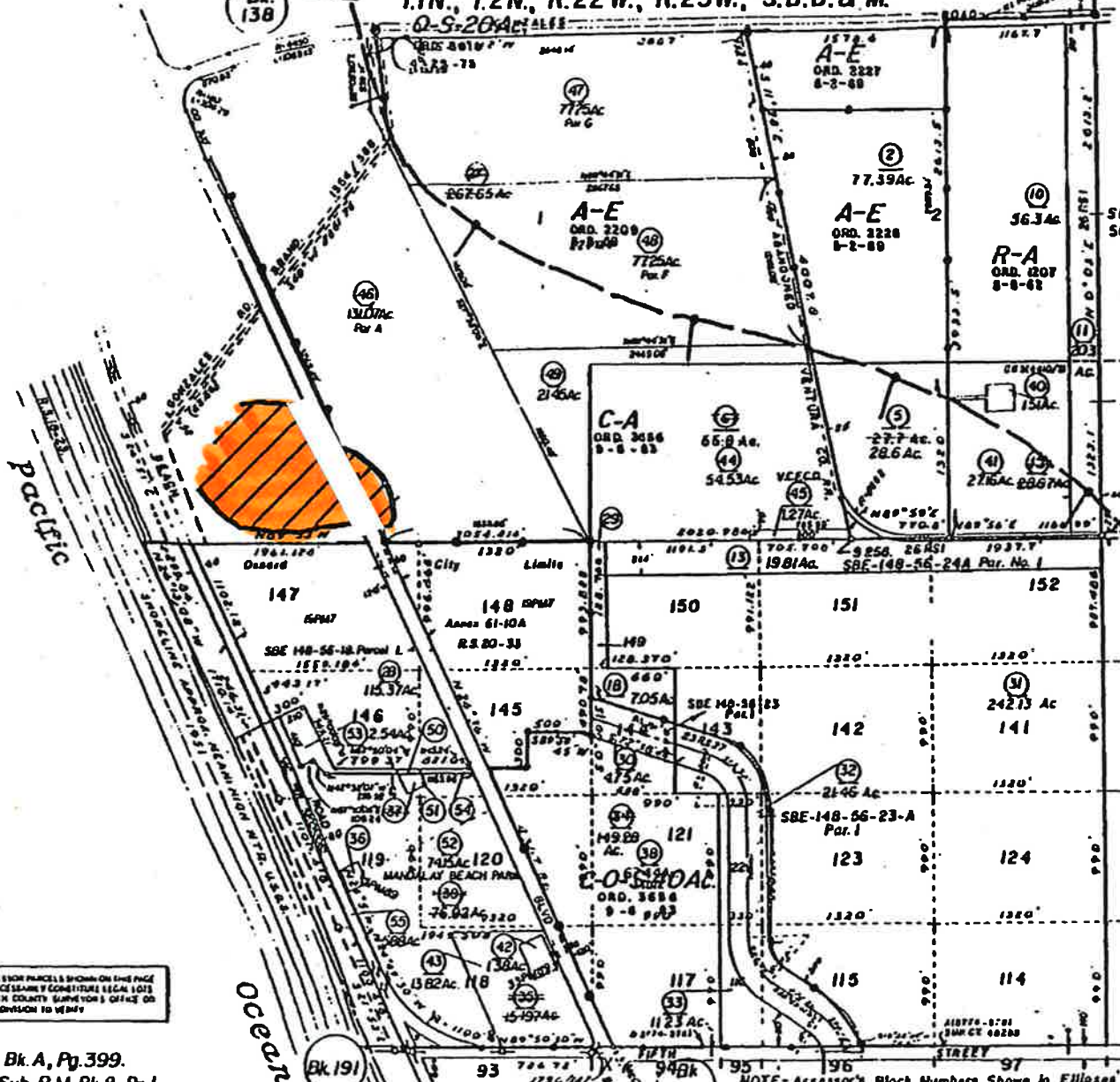
NOTE - Assessor's Block Numbers Shown in Ellipses.
 Assessor's Parcel Numbers Shown in Circles.

Bk 138

T.1N., T.2N., R.22W., R.23W., S.B.B. & M.

183-01

Tax Rate Area
 73012
 73013
 03040
 03148
 03006
 03167



NOTE: ASSESSOR PARCELS SHOWN ON THIS PAGE DO NOT NECESSARILY CONSTITUTE LEGAL LOTS OR LOTS WITH COUNTY SURVEYOR'S OFFICE OR PLANNING DIVISION TO VERIFY

VENTURA COUNTY PLANNING DEPARTMENT
 ZONING MAP 183-01
 BOARD OF SUPERVISORS COUNTY OF VENTURA
 ORDINANCE 3666 ADOPTED 9-8-83
 COUNTY CLERK Robert L. Dwyer
 Jay Willard Deputy
 Bk 183

CITY OF OXNARD
 & VICINITY
 Assessor's Map Bk 183-Pg. 01
 County of Ventura, Calif.

Ra. Colonia R.M. Bk. A, Pg. 399.
 Patterson Ranch Sub. R.M. Bk. B, Pg. 1.

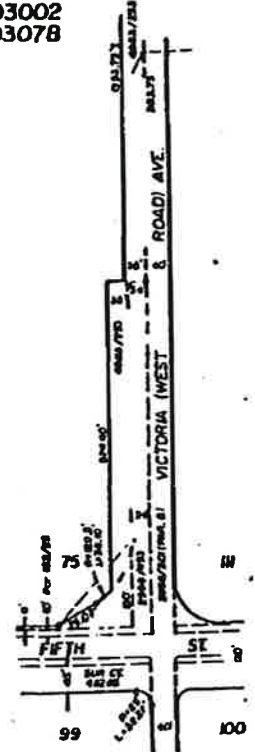
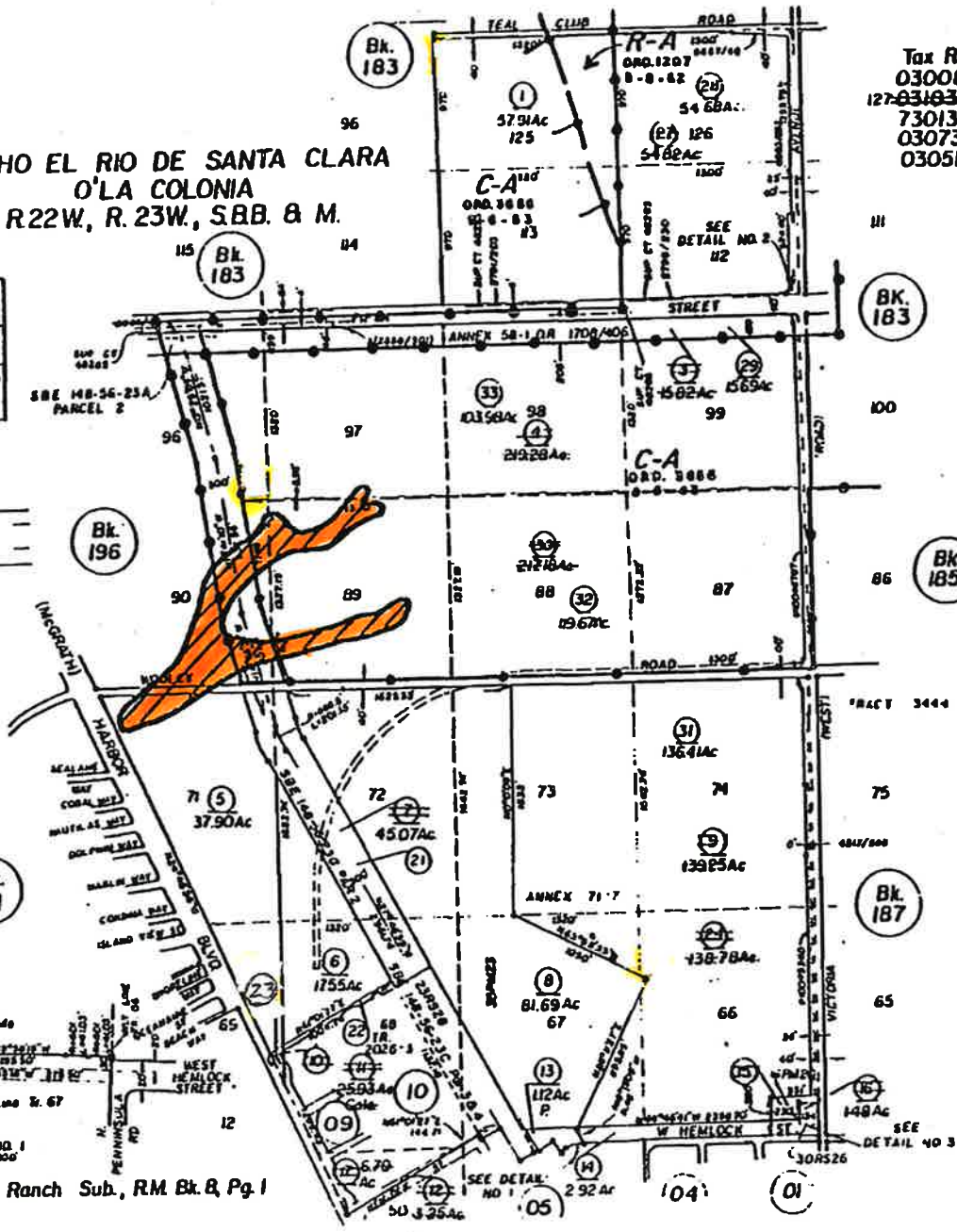
NOTE - Assessor's Block Numbers Shown in Ellipses
 Assessor's Parcel Numbers Shown in Circles

188-11
SEP 6 1973

Tax Rate Area
03008 03092
127-03193- 73002
73013 03067
03073 03016
03051 03002
03078

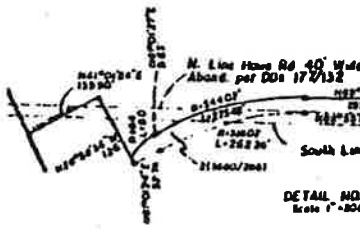
VENTURA COUNTY PLANNING DEPARTMENT
ZONING MAP 88-11
BOARD OF SUPERVISORS COUNTY OF VENTURA
ORDINANCE 8006
COUNTY CLERK
Deputy

RANCHO EL RIO DE SANTA CLARA
O'LA COLONIA
T.1N., R.22W., R.23W., S.B.B. & M.



DETAIL NO. 2
Scale 1"=100'

NOTE: ALL EASEMENTS SHOWN ON THIS MAP
DO NOT NECESSARILY CONSTITUTE LEGAL EASEMENTS.
CHECK WITH COUNTY SURVEYOR'S OFFICE OR
PLANNING DEPARTMENT TO VERIFY.



DETAIL NO. 1
Scale 1"=200'

Patterson Ranch Sub., RM Bk. & Pg. 1

CITY OF OXNARD
& VICINITY
Ventura County Assessor's Map.

Assessor's Block Numbers Shown in Ellipses.
Assessor's Parcel Numbers Shown in Circles.
Assessor's Acreal Numbers Shown in Squares.

DRAWN	CHECKED
REDRAWN BY	DATE 5-11-73
NOTED BY	EFFECTIVE 11-72 ROLL
PREVIOUS BK 183, Pg. 02	

Compiled By Ventura County Assessors Office

69-TOTT

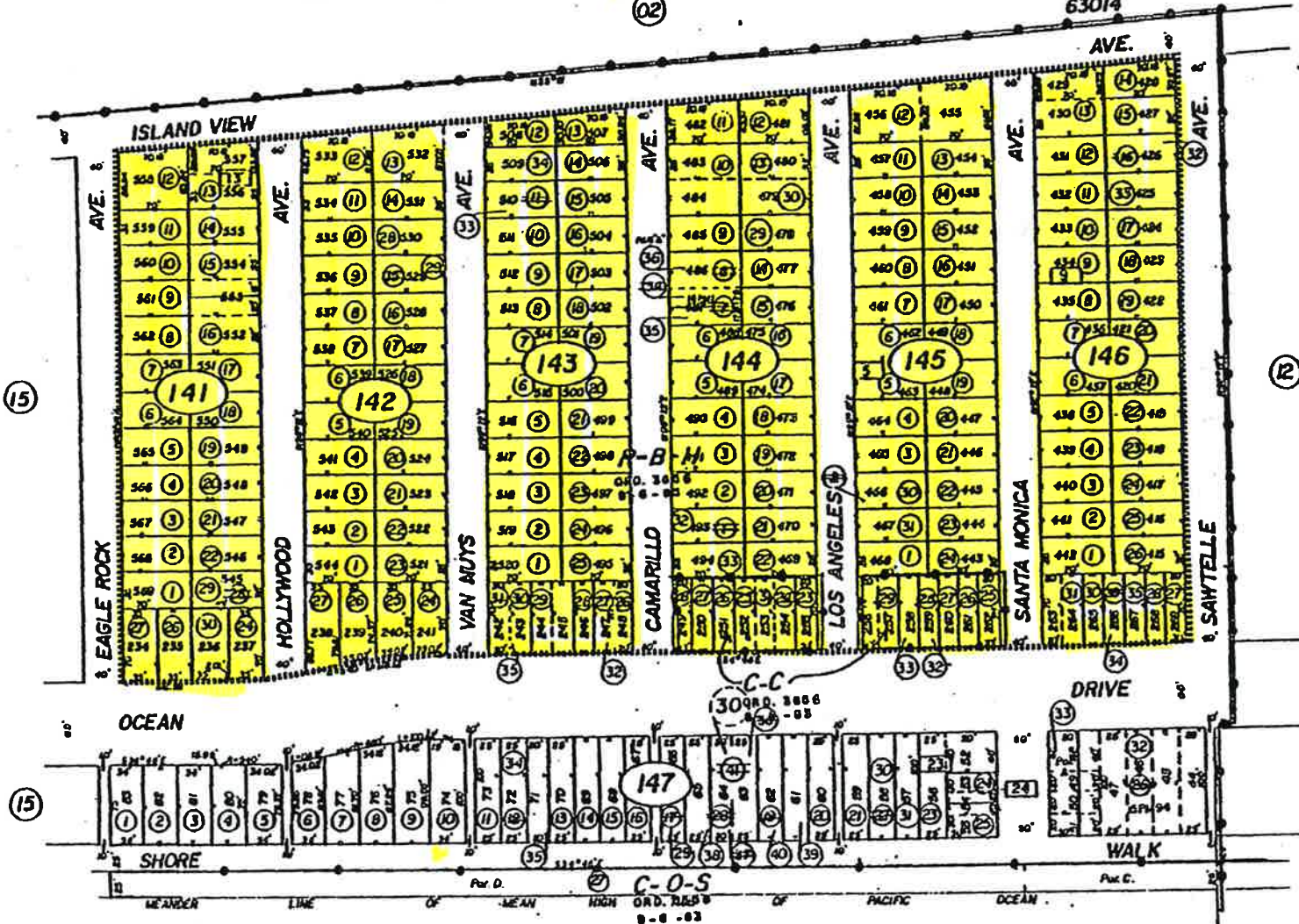
RANCHO EL RIO DE SANTA CLARA O'LA COLONIA

(02)

Tax Rate Area
63012
63014

206-14
SEP 6 1981

808-11



VENTURA COUNTY PLANNING DEPARTMENT
LOCAL HARBOR ZONING MAP 206-14
APPROVED BY BOARD OF SUPERVISORS COUNTY OF VENTURA
ORDINANCE 2498 ADOPTED 9-28-81
COUNTY CLERK
P. J. ...

Silver Strand Tract R.M. Bk. 15, Pg. 14

NOTE: ALL PARCELS SHOWN ON THIS PAGE DO NOT NECESSARILY EQUAL LOTS CHECK WITH COUNTY SURVEYOR'S OFFICE OR PLANNING DEPARTMENT TO VERIFY

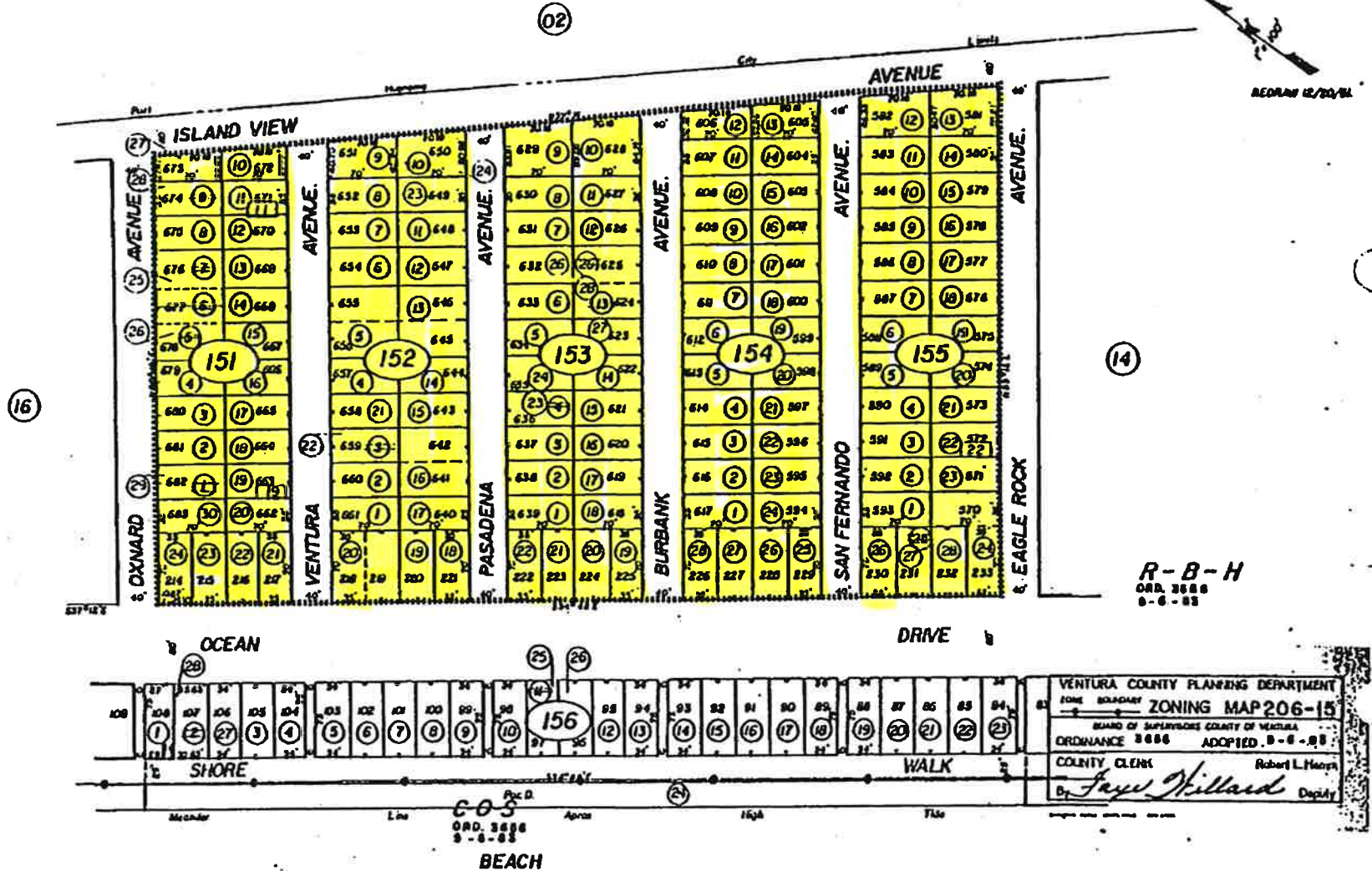
NOTE: Assessor's Block Numbers Shown in Ellipses Assessor's Parcel Numbers Shown in Circles

Assessor's Map Bk. 206, Pg. 14
County of Ventura, Calif.

RANCHO EL RIO DE SANTA CLARA OLA COLONIA

Tax Rate Area
63014
63012

206-15
SEP 8 1981



Silver Strand Tract R.M. Bk. 15, Pg. 14

NOTE: MASS ESION PARCELS SHOWN ON THIS PAGE DO NOT NECESSARILY CONSTITUTE LEGAL LOTS. CHECK WITH COUNTY SURVEYOR'S OFFICE OR PLANNING DEPARTMENT TO VERIFY.

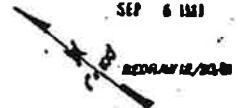
Assessor's Map Bk. 206, Pg. 15.
County of Ventura, Calif.

NOTE - Assessor's Block Numbers Shown in Ellipses
Assessor's Parcel Numbers Shown in Circles

RANCHO EL RIO DE SANTA CLARA O'LA COLONIA

Tax Rate Area
63012
63014

206-16
SEP 6 1981



(02)



Silver Strand Tract R.M. Bk. 15, Pg. 14

NOTE: ALL PARCELS SHOWN ON THIS PAGE DO NOT NECESSARILY CONSTITUTE LEGAL LOTS. CHECK WITH COUNTY SUPERVISOR'S OFFICE OR PLANNING DIVISION TO VERIFY.

VENTURA COUNTY PLANNING DEPARTMENT
ZONING MAP 206-16
 BOARD OF SUPERVISORS COUNTY OF VENTURA
 ORDINANCE 3888 ADOPTED 8-6-83
 COUNTY CLERK Robert L. Harco
 By *Suzanne Hillard* Deputy

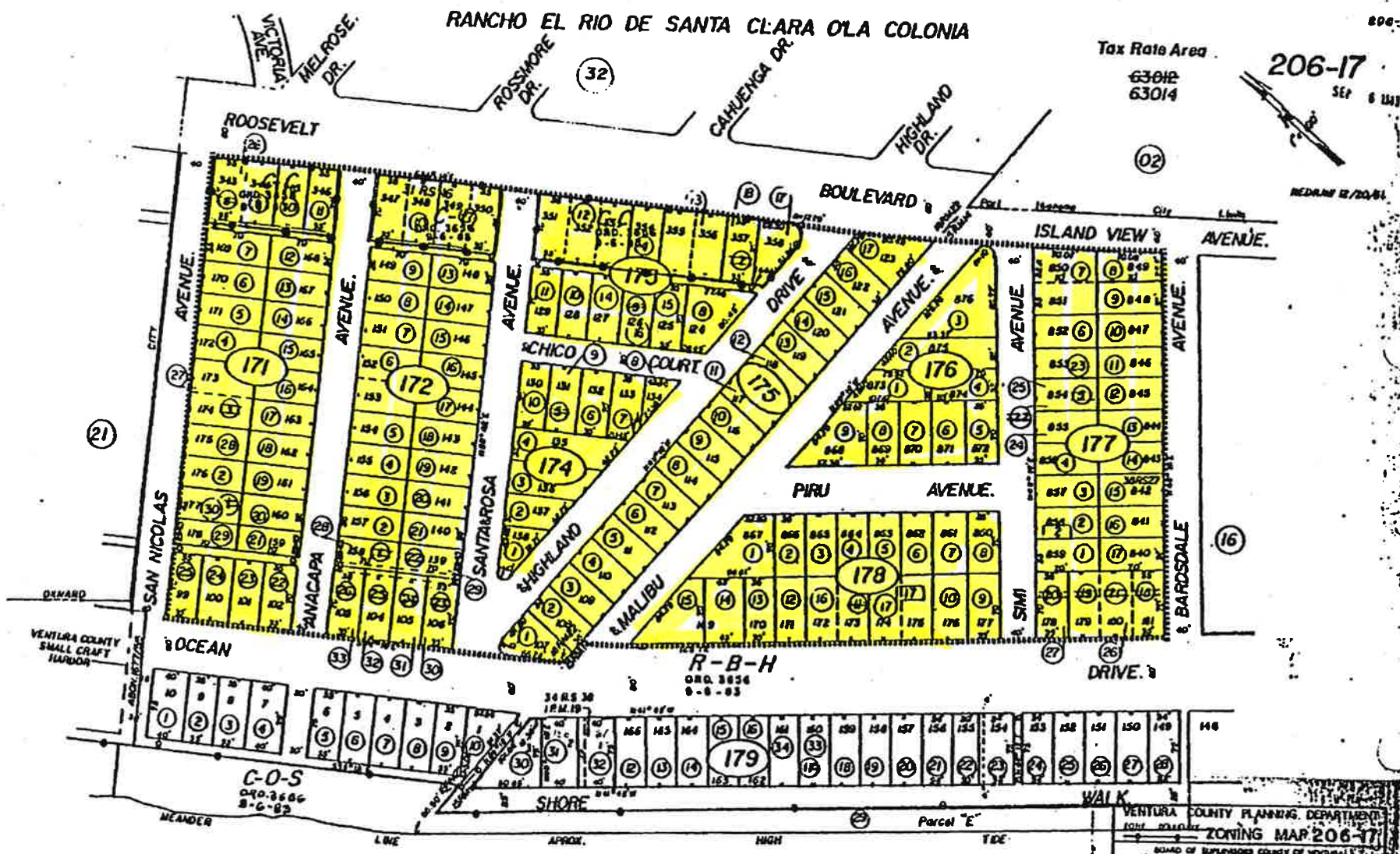
Assessor's Map Bk. 206, Pg. 16
 County of Ventura, Calif.

NOTE - Assessor's Block Numbers Shown in Ellipses
 Assessor's Parcel Numbers Shown in Circles

RANCHO EL RIO DE SANTA CLARA OLA COLONIA

Tax Rate Area
63012
63014

206-17
SEP 6 1981



Hollywood By The Sea.R.M.Bk.18, Pg.22.
 Silver Strand Tract.R.M.Bk.15, Pg.14
 Parcel Map, P.M. Bk. 1, Pg. 19

BEACH

NOTE: ALL LOTS OR PARCELS SHOWN ON THIS PAGE
 DO NOT HAVE A COUNTY CORNER SURVEY RECORD.
 THE DE. AREA COUNTY SURVEYOR'S OFFICE CAN
 BE CONTACTED FOR MORE INFO.

VENTURA COUNTY PLANNING DEPARTMENT
 ZONING MAP 206-17
 BOARD OF SUPERVISORS COUNTY OF VENTURA
 ORDINANCE 8868 ADOPTED 8-8-81
 COUNTY CLERK Robert L. James

Assessor's Map Bk206, Pg.17
 County of Ventura, Calif.

NOTE: Assessor's Block Numbers Shown in Ellipses
 Assessor's Parcel Numbers Shown in Circles

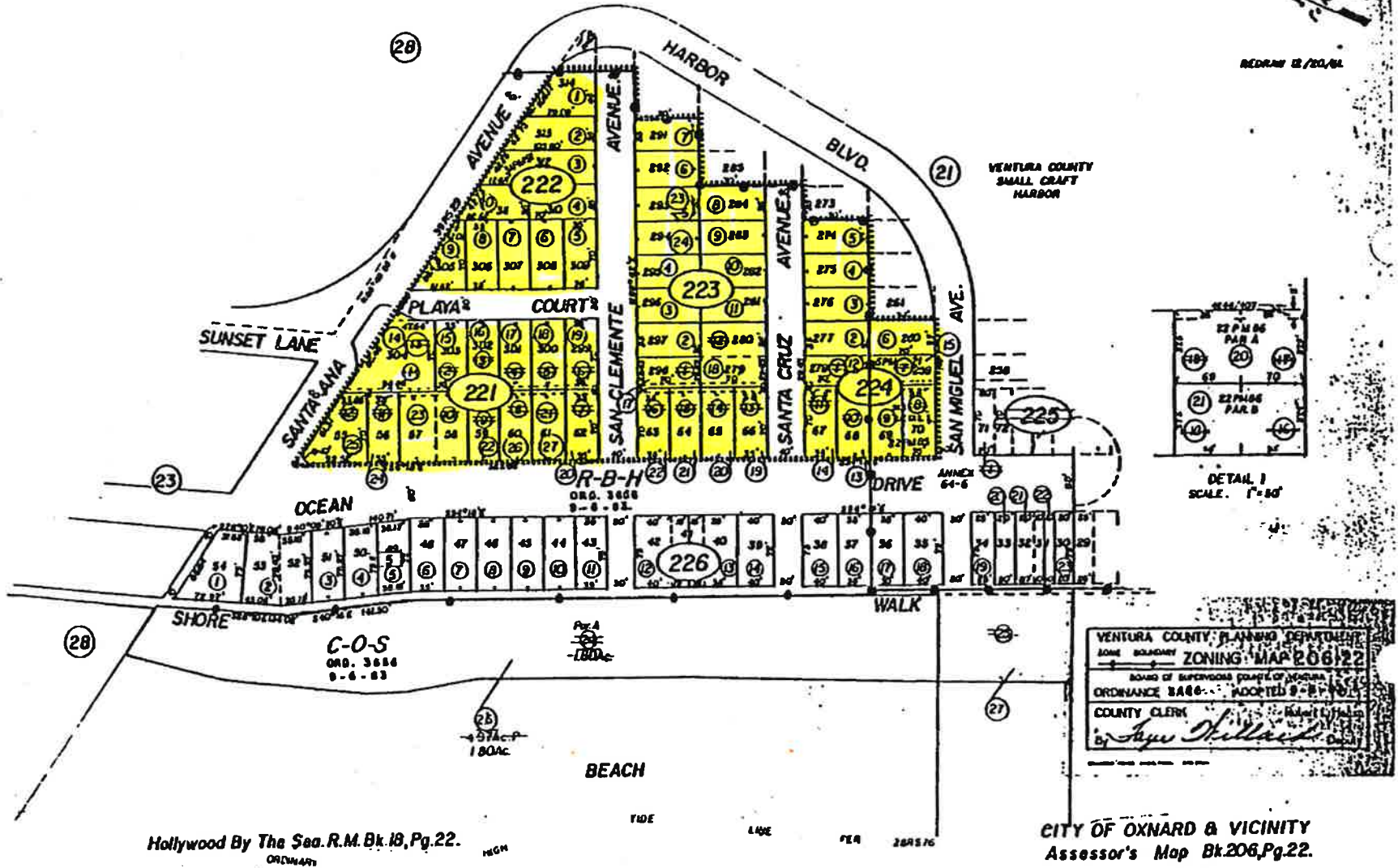
RANCHO EL RIO DE SANTA CLARA O'LA COLONIA.

Tax Rate Area
03077
63012

206-22

SEP 8 1981

REORIN 12/20/81



Hollywood By The Sea R.M. Bk. 18, Pg. 22.

CITY OF OXNARD & VICINITY
Assessor's Map Bk. 206, Pg. 22.
County of Ventura, Calif.

NOTE: ASSessor's BLOCK NUMBERS SHOWN ON THIS PAGE DO NOT NECESSARILY CORRESPOND TO LEGAL LOTS. CHECK WITH COUNTY SURVEYOR'S OFFICE OR PLANNING DIVISION TO VERIFY.

NOTE - Assessor's Block Numbers Shown in Ellipses
Assessor's Parcel Numbers Shown in Circles

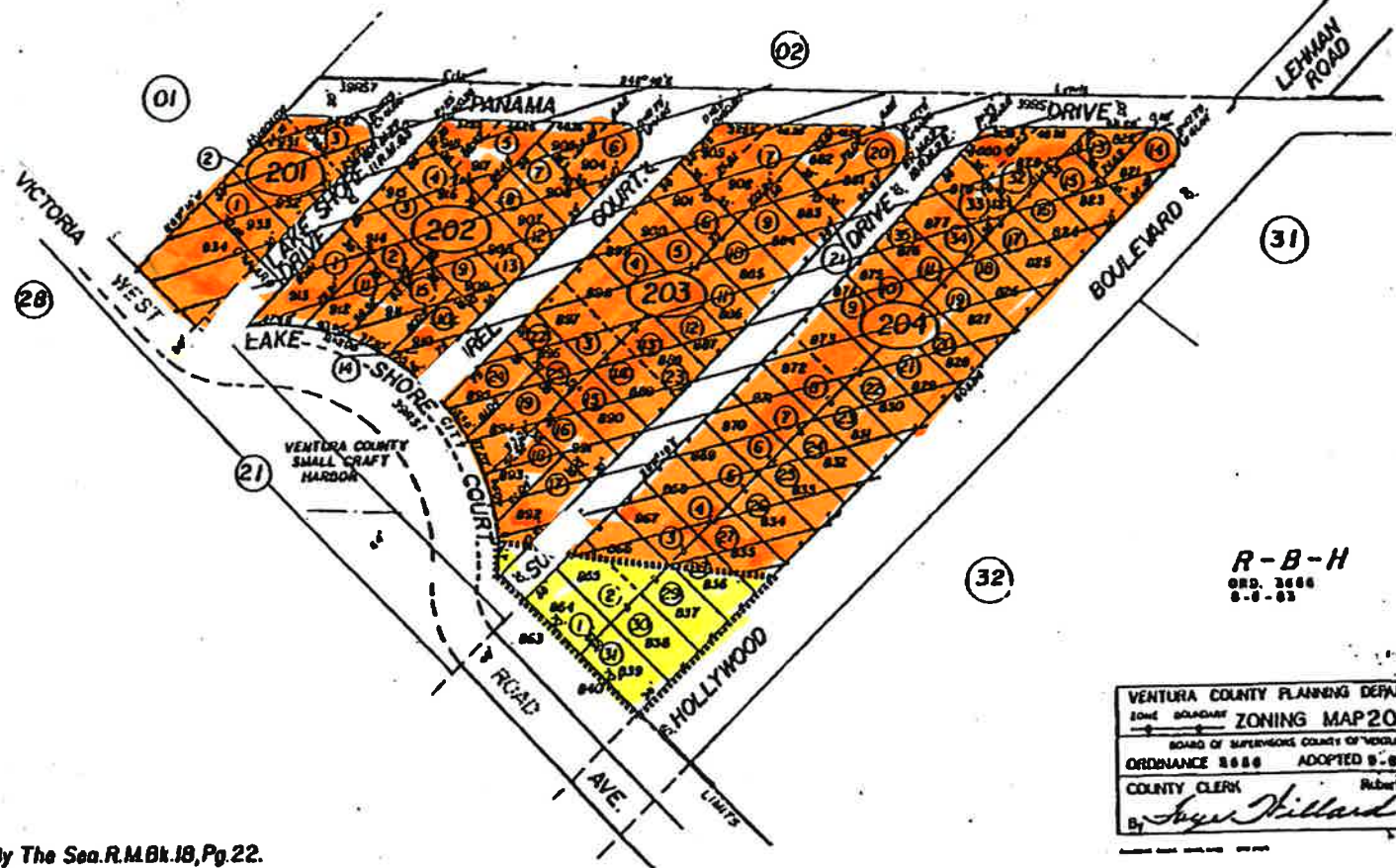
HANCHO EL RIO DE SANTA CLARA O'LA COLONIA

Tax Rate Area
63012
63014

206-20

SER 6 141

REDRAW 12/20/64



R-B-H
ORD. 2666
8-9-63

VENTURA COUNTY PLANNING DEPARTMENT	
ZONE BOUNDARY	ZONING MAP 206-20
BOARD OF SUPERVISORS COUNTY OF VENTURA	
ORDINANCE 2666	ADOPTED 8-9-63
COUNTY CLERK	Rubert L. Hagan
By <i>Agnes Willard</i>	Deputy

Hollywood By The Sea. R.M.Bk. 18, Pg. 22.
Lake Shore Tract. R.M.Bk. 11, Pg. 82

NOTE: ASSESSOR PARCELS SHOWN ON THIS PAGE DO NOT NECESSARILY CONSTITUTE FINAL LOTS AND SHOULD BE CHECKED WITH COUNTY PLANNING OFFICE OR PLANNING DIVISION TO VERIFY

NOTE - Assessor's Block Numbers Shown in Ellipses
Assessor's Parcel Numbers Shown in Circles

Assessor's Map Bk. 206, Pg. 20
County of Ventura, Calif.

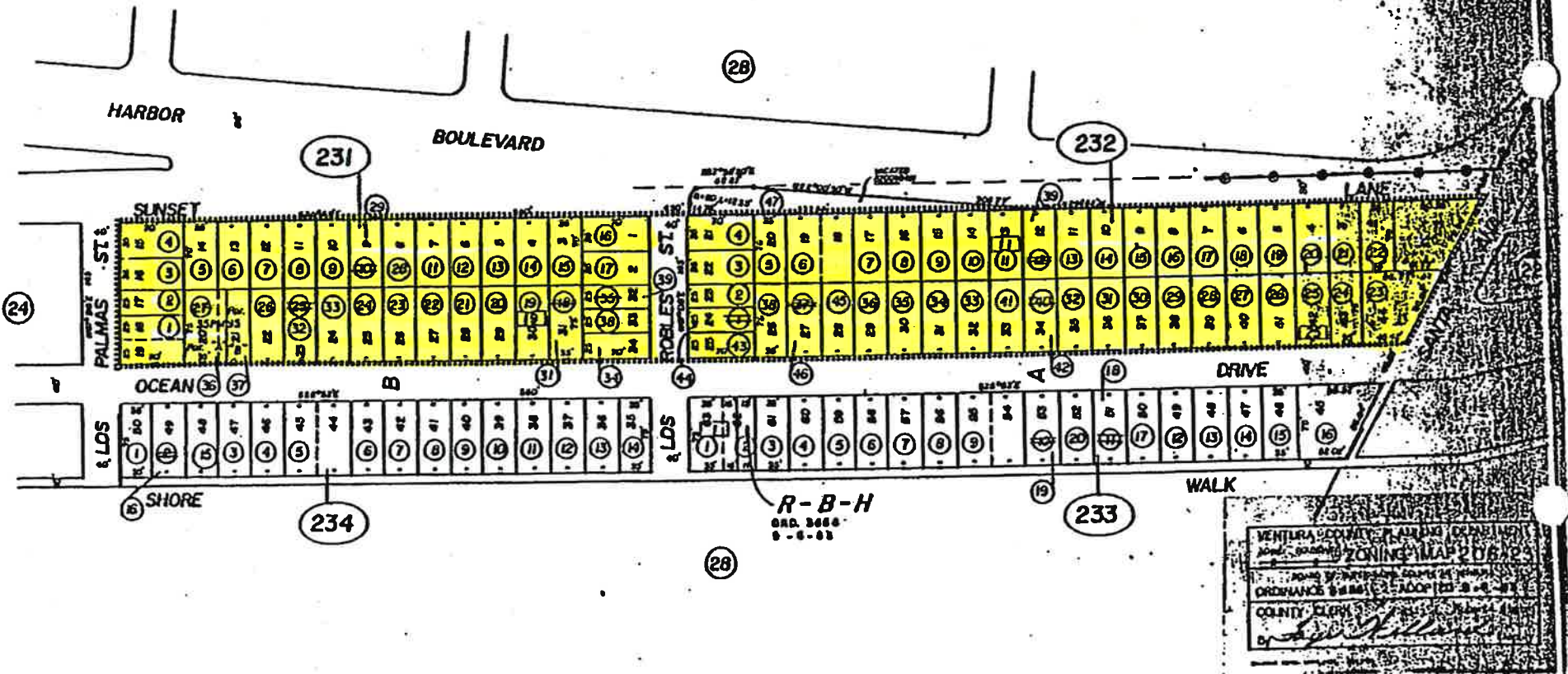
RANCHO EL RIO DE SANTA CLARA O'LA COLONIA

Tax Rate Area
63012

206-23

52

REDRAWN
12-11-61



R-B-H
ORD. 3468
9-6-63

NOTE: ASSESSOR PARCELS SHOWN ON THIS PAGE
DO NOT NECESSARILY CONSTITUTE A LEGAL LOT.
CHECK WITH COUNTY SURVEYORS OFFICE OR
PLANNING DIVISION TO VERIFY

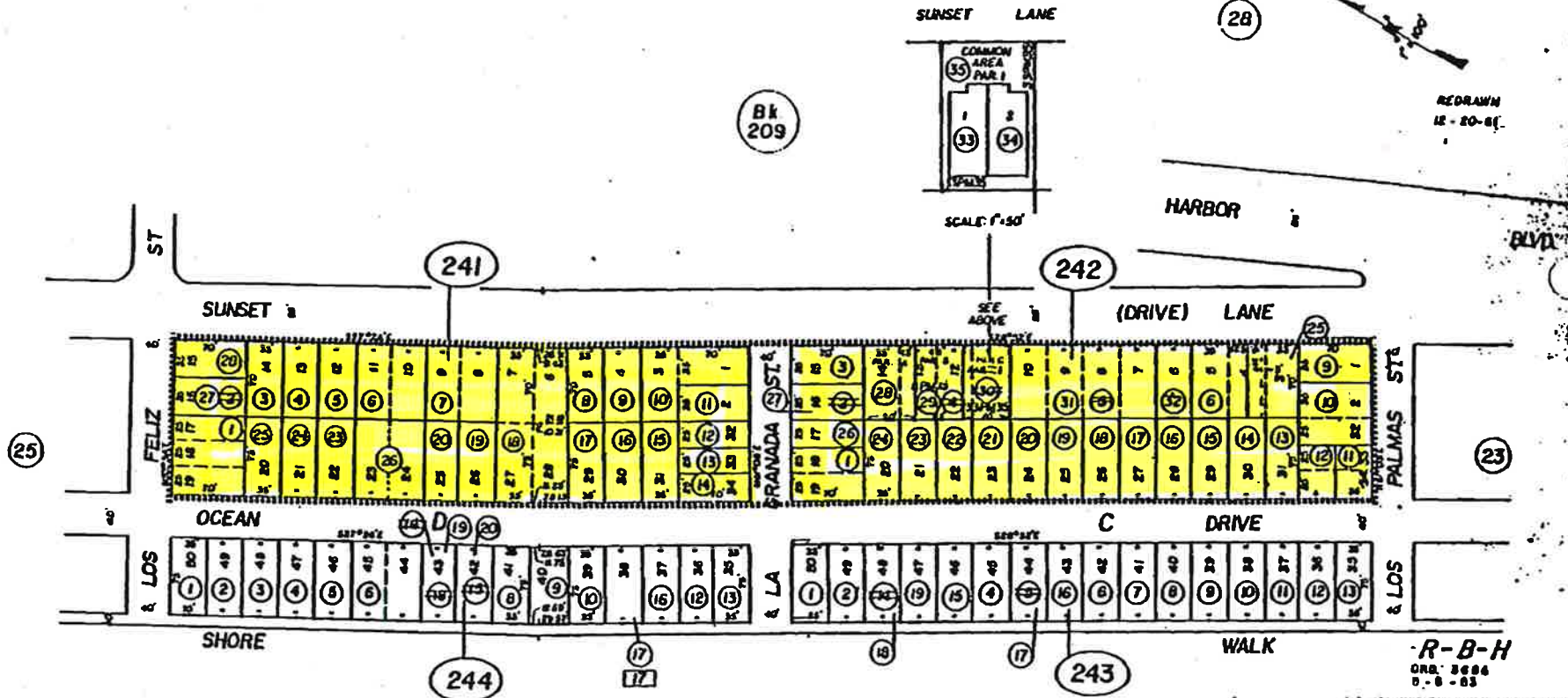
Assessor's Map Bk. 206 Pg. 23
County of Ventura, Calif.

Hollywood Beach Tract, R.M. Bk. 13, Pg. 2

NOTE - Assessor's Block Numbers Shown in Ellipses
Assessor's Parcel Numbers Shown in Circles

RANCHO EL RIO DE SANTA CLARA O'LA COLONIA

Tax Rate Area 63012 206-24
SLP 8 M3



VENTURA COUNTY PLANNING DEPARTMENT
ZONING MAP 206
BOARD OF SUPERVISORS COUNTY OF VENTURA
ORDINANCE 2880 ADOPTED 3-2-81
COUNTY CLERK
By *Ray Hillard*

Parcel 1, P.M. Bk. 33, Pg. 35 (Condo. Plan Per 810032702)
Hollywood Beach Tract, R.M. Bk. 13, Pg. 2

NOTE - Assessor's Block Numbers Shown in Ellipses
Assessor's Parcel Numbers Shown in Circles

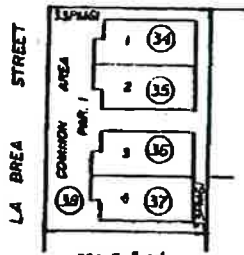
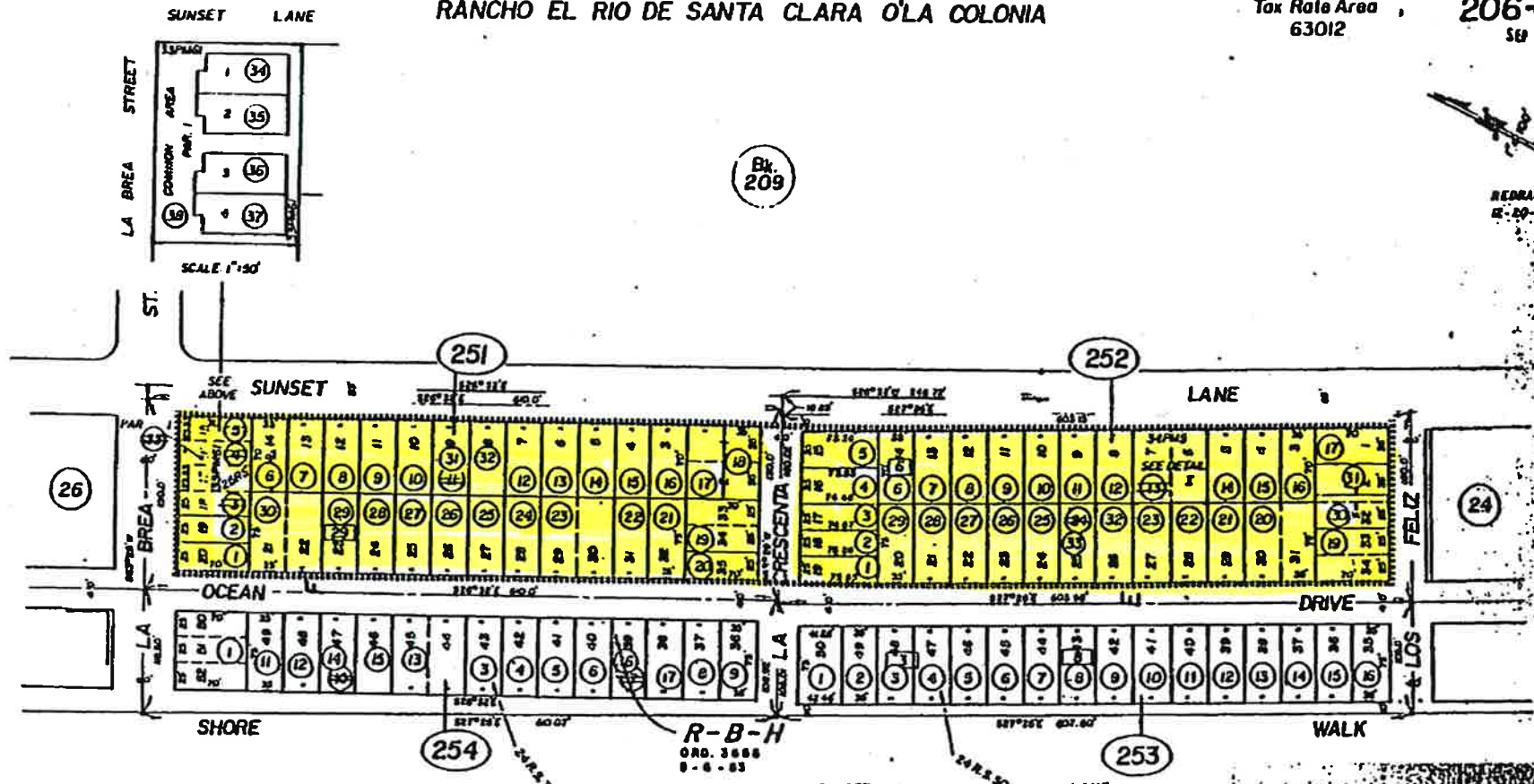
Assessor's Map Bk. 206 Pg. 24
County of Ventura, Calif.

RANCHO EL RIO DE SANTA CLARA O'LA COLONIA

Tax Rate Area
63012

206-25

SEP 8 1981



Bk. 209

REDRAWN
12-29-81

26

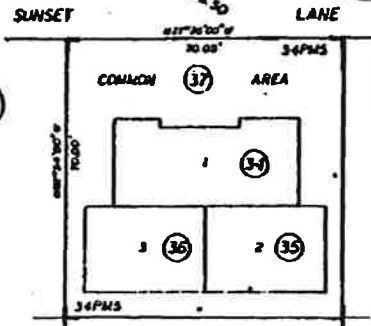
24

254

R-B-H
ORD. 3888
9-6-83

253

28



NOTE:
For further information
see C.C. and R.s. per
ORDINANCE 3888 - ADOPTED 9-6-83
DETAIL 1
SCALE: 1" = 30'

VENTURA COUNTY PLANNING DEPARTMENT
ZONING MAP 206-25
COUNTY CLERK
By *Ann J. Hillman*

Assessor's Map Bk.206 Pg.25
County of Ventura, Calif.

NOTE - Assessor's Block Numbers Shown in Ellipses
Assessor's Parcel Numbers Shown in Circles

NOTE: ABOVE SHOWN PARCELS & BOUNDARIES ON THIS PAGE
DO NOT NECESSARILY REPRESENT LEGAL LOTS
OR LOTS WITH EXISTING SURVEYOR'S OFFICE OR
PLANNING DEPARTMENT RECORDS

Parcel Map Bk.34, Pg.5, (Condominium Plan 810073190)
Parcel 1, P.M. Bk.33, Pg.61 (Condo. Plan Per 810046338)
Hollywood Beach Tract, R.M. Bk.13, Pg.2

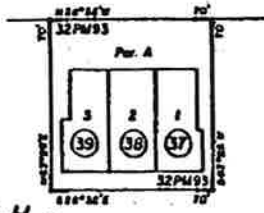
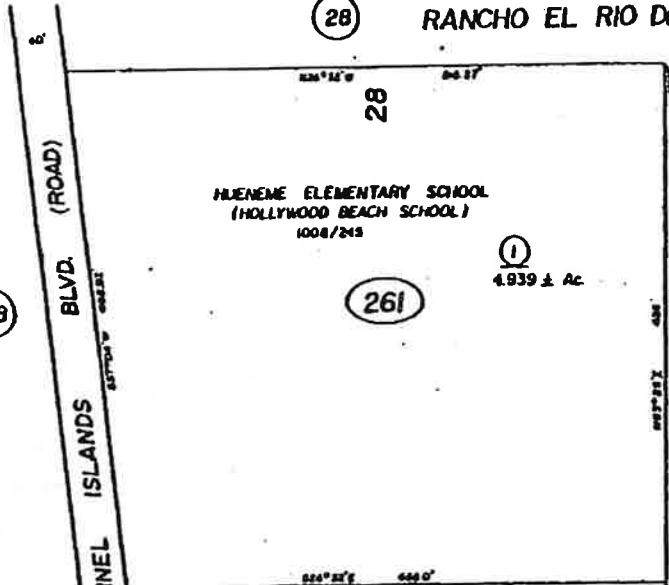
28

RANCHO EL RIO DE SANTA CLARA OLA COLONIA

Tax Rate Area
63008
63012

206-26

SEP 6 1981



NOTE:
For further information
pertaining to this Condo,
see C.C. & P.'s per B10091916

Bk. 209

VENTURA COUNTY PLANNING DEPARTMENT
ZONING MAP 206-26
BOARD OF SUPERVISORS RESOLUTION NO. 1000
ORDINANCE 8065, ADOPTED 9-6-81
COUNTY CLERK

R-B-H
O.D. 8888
9-6-83

28

CHANNEL ISLANDS BLVD. (ROAD)

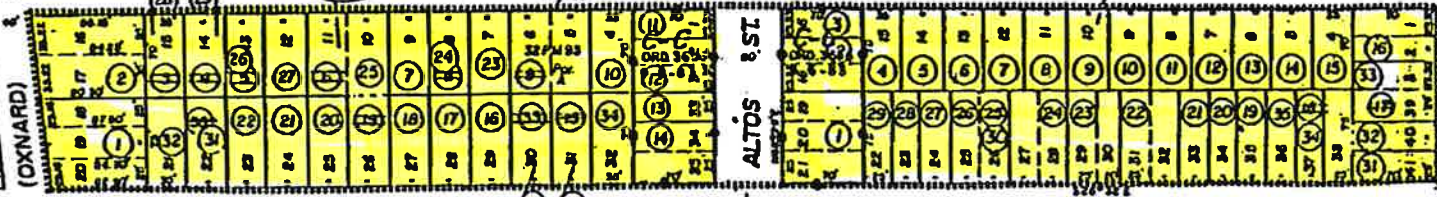
27

(OXNARD)

262

SUNSET

263

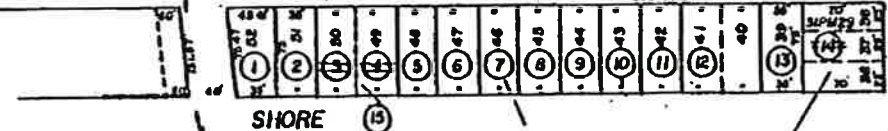


OCEAN

H

G

DRIVE



LOS

ST

N PLAZA

S PLAZA

WALK

267

29

266

265

264

28

ORDINARY HIGH TIDE
LINE PER 28R576

SEE RESEARCH FILE RE:
NEARBUCK PROPERTY

Assessor's Map Bk.206Pg.26
County of Ventura, Calif.

NOTE- Assessor's Block Numbers Shown in Ellipses
Assessor's Parcel Numbers Shown in Circles

Parcel Map, P.M. Bk.32, Pg.93 (Condo. Plan B10091916)
Patterson Ranch Sub., R.M. Bk.8, Pg.1
Hollywood Beach Tract, R.M. Bk.13, Pg.2

NOTE: NAME EACH PARCEL AS SHOWN ON THIS PAGE
DO NOT RECORDED WITH COUNTY OFFICE OR
PLANNING DEPARTMENT

206-27

206-27
51' x 101'

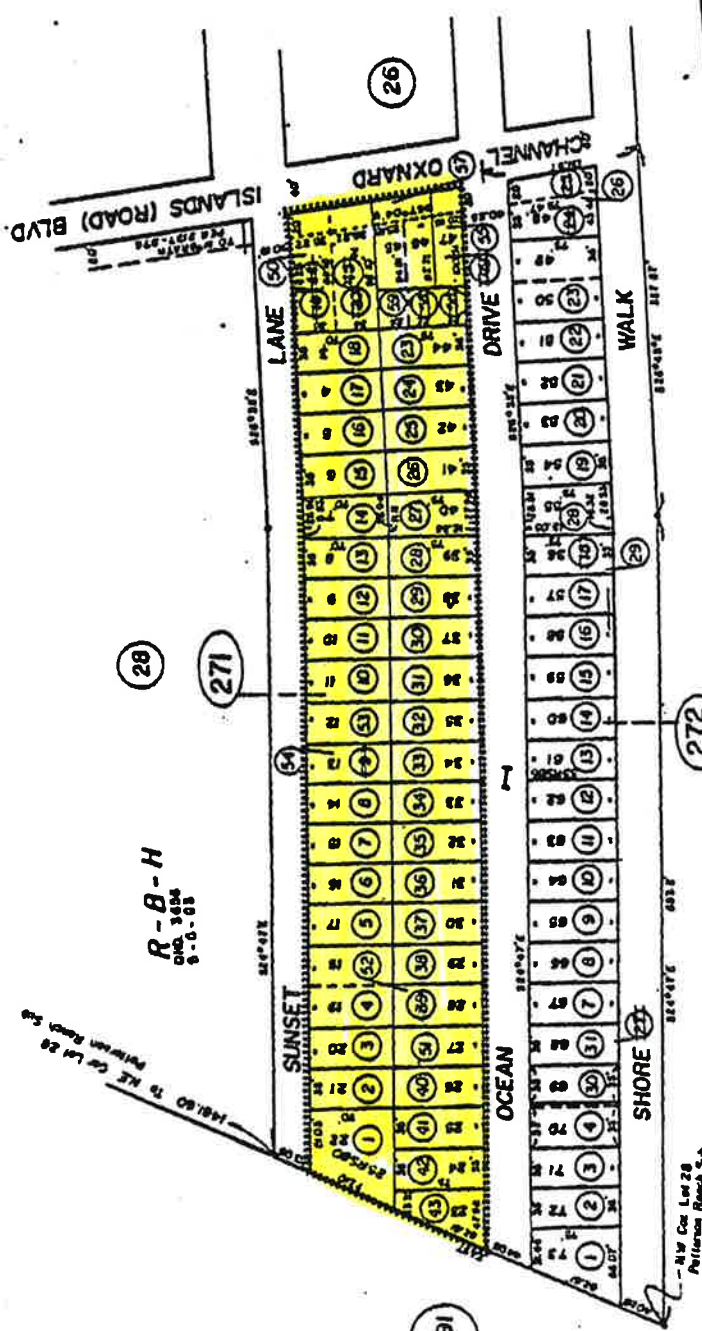
Tax Rate Area
63012



REDMAN
12-22-61

RANCHO EL RIO DE SANTA CLARA O'LA COLONIA

R-B-H
Ord. 3694
9-6-65



VENTURA COUNTY PLANNING DEPARTMENT
 ZONING MAP 206-27
 BOARD OF SUPERVISORS COUNTY OF VENTURA
 ORDINANCE 3884 ADOPTED 9-8-65
 COUNTY CLERK Robert L. Hooper
 By *Ray Hillard* Deputy

Assessor's Map Bk. 206 Pg. 27
 County of Ventura, Calif.

NOTE: ALL LOTS AND PARCELS SHOWN ON THIS MAP
 DO NOT REPRESENT EXISTING LOTS OR
 PARCELS WITH EXCEPT AS SHOWN ON
 PLANS FILED IN THE COUNTY CLERK'S OFFICE

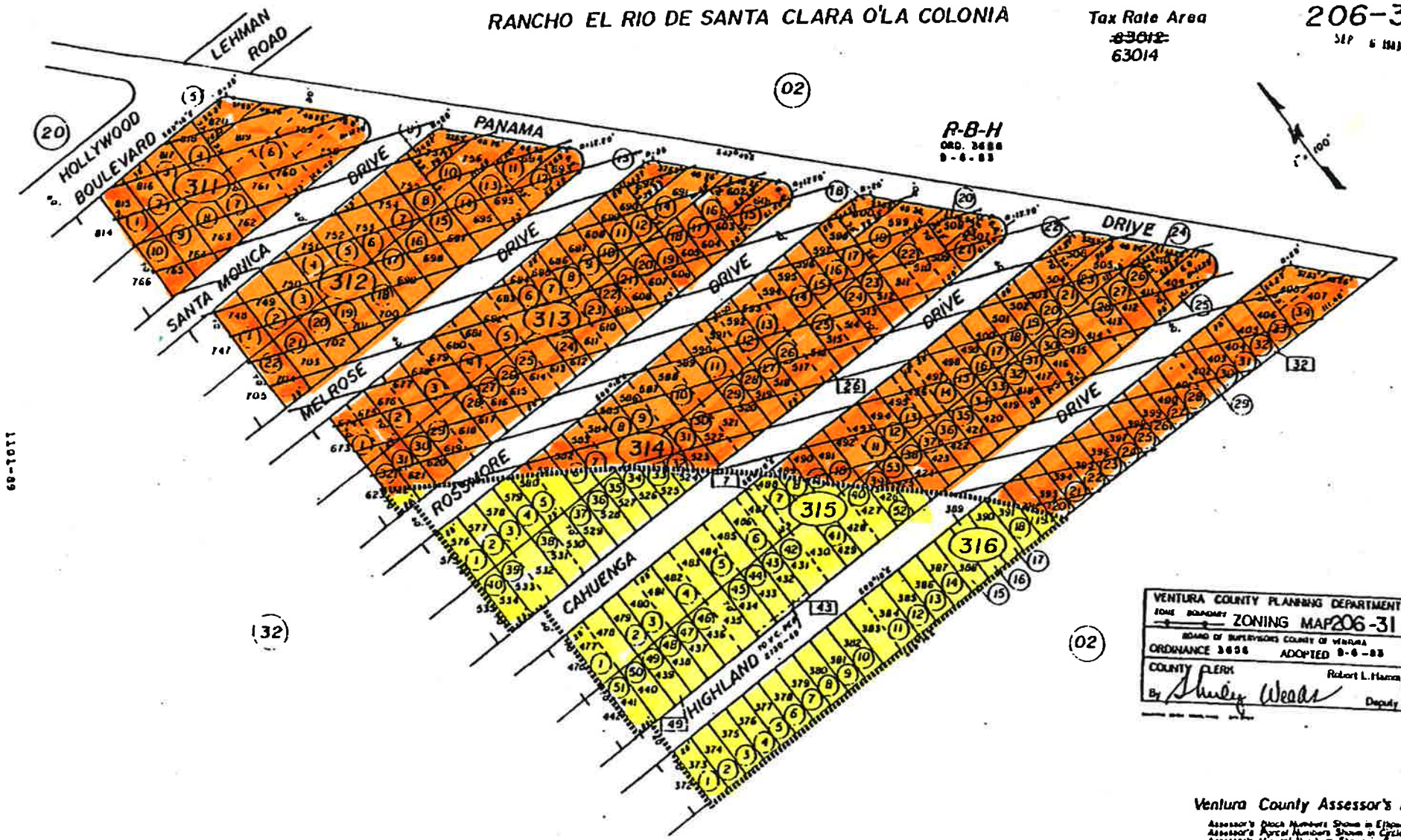
NOTE - Assessor's Block Numbers Shown in Ellipses
 Assessor's Parcel Numbers Shown in Circles

Hollywood Beach Tract, R.M. Bk. 13, Pg. 2

RANCHO EL RIO DE SANTA CLARA O'LA COLONIA

Tax Rate Area
~~63012~~
 63014

206-31
 517 6 111



P-B-H
 ORD. 3488
 9-6-83

VENTURA COUNTY PLANNING DEPARTMENT
 ZONING MAP 206-31
 BOARD OF SUPERVISORS COUNTY OF VENTURA
 ORDINANCE 3488 ADOPTED 9-6-83
 COUNTY CLERK Robert L. Harms
 By *Shirley Weeds* Deputy

Ventura County Assessor's Map.

Assessor's Block Numbers Shown in Italic
 Assessor's Parcel Numbers Shown in Circle
 Assessor's Aerial Numbers Shown in Square

DRAWN	CHECKED
REDRAWN S E	DATE 8-3-82
INKED	EFFECTIVE ROLL
PREVIOUS BK 206, Partion Pgs 10 B 19	
Compiled By Ventura County Assessor's Office	

NOTE: ASSessor PARCELS SHOWN ON THIS PAGE DO NOT NECESSARILY CORRESPOND TO EACH LOT'S SIZE OR WITH COUNTY SUPERVISOR'S OFFICE OR PLANNING DEPARTMENT TO VERIFY

Hollywood By The Sea R.M.Bk.18, Pg.22

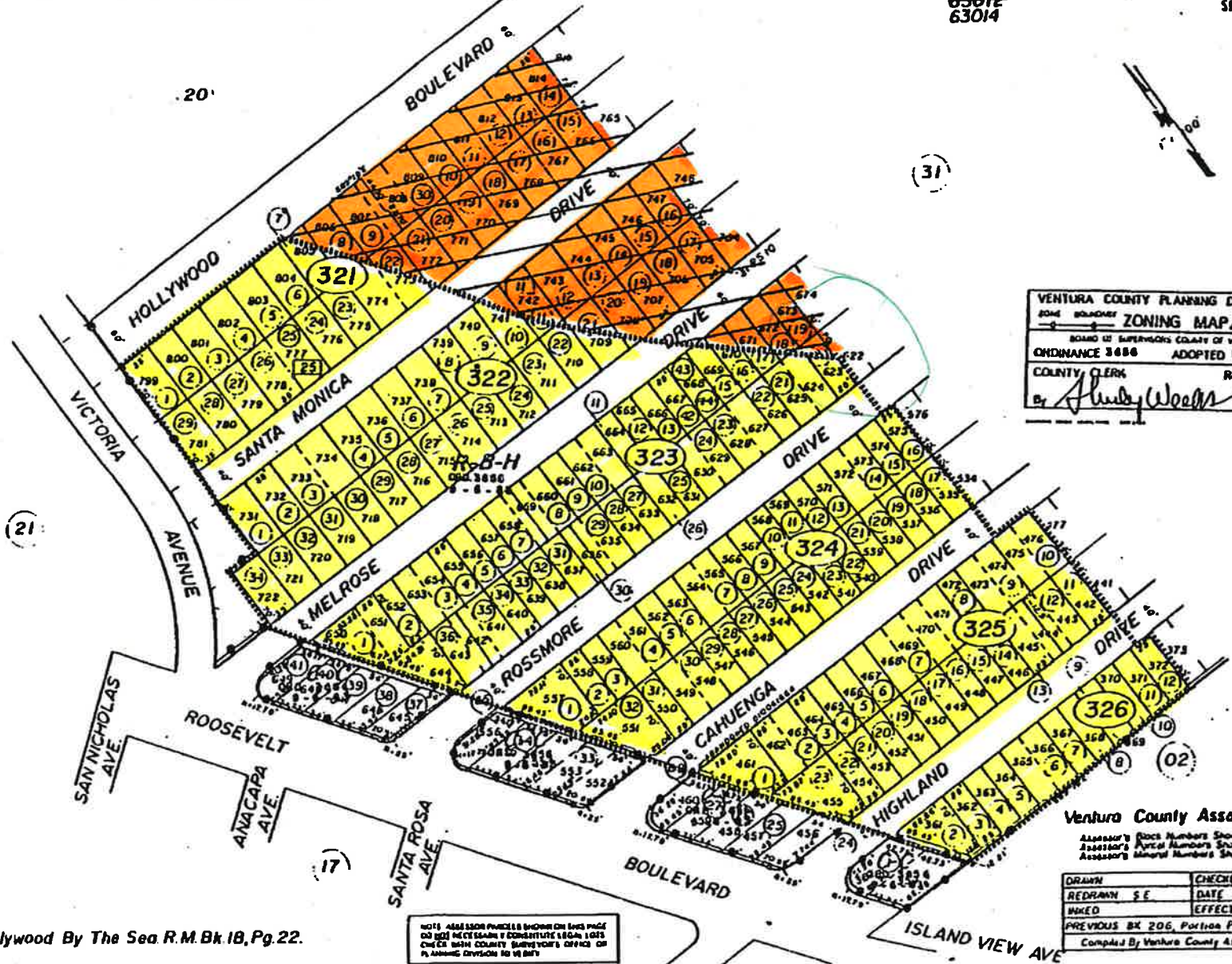
60-1011

RANCHO EL RIO DE SANTA CLARA O'LA COLONIA

Tax Rate Area
63012
63014

206-32

511 1 1981



VENTURA COUNTY PLANNING DEPARTMENT
 ZONING MAP 206-32
 BOARD OF SUPERVISORS COUNTY OF VENTURA
 ORDINANCE 3686 ADOPTED 8-6-80
 COUNTY CLERK Robert L. Harris
 By *Shirley Walsh* Deputy

Ventura County Assessor's Map.

Assessor's Block Numbers Shown in Circles
 Assessor's Parcel Numbers Shown in Circles
 Assessor's Aerial Numbers Shown in Squares

DRAWN	CHECKED
REDRANN S E	DATE 8-3-82
WIKED	EFFECTIVE ROLL
PREVIOUS BK 206, Portion Pgs 18 & 19	
Compiled By Ventura County Assessor's Office	

NOTE: ALL LOTS SHOWN ARE SHOWN ON THIS PAGE
 DO NOT INCLUDE LOTS 1 THROUGH 1000
 CHECK WITH COUNTY SUPERVISOR'S OFFICE OR
 PLANNING DIVISION FOR INFO

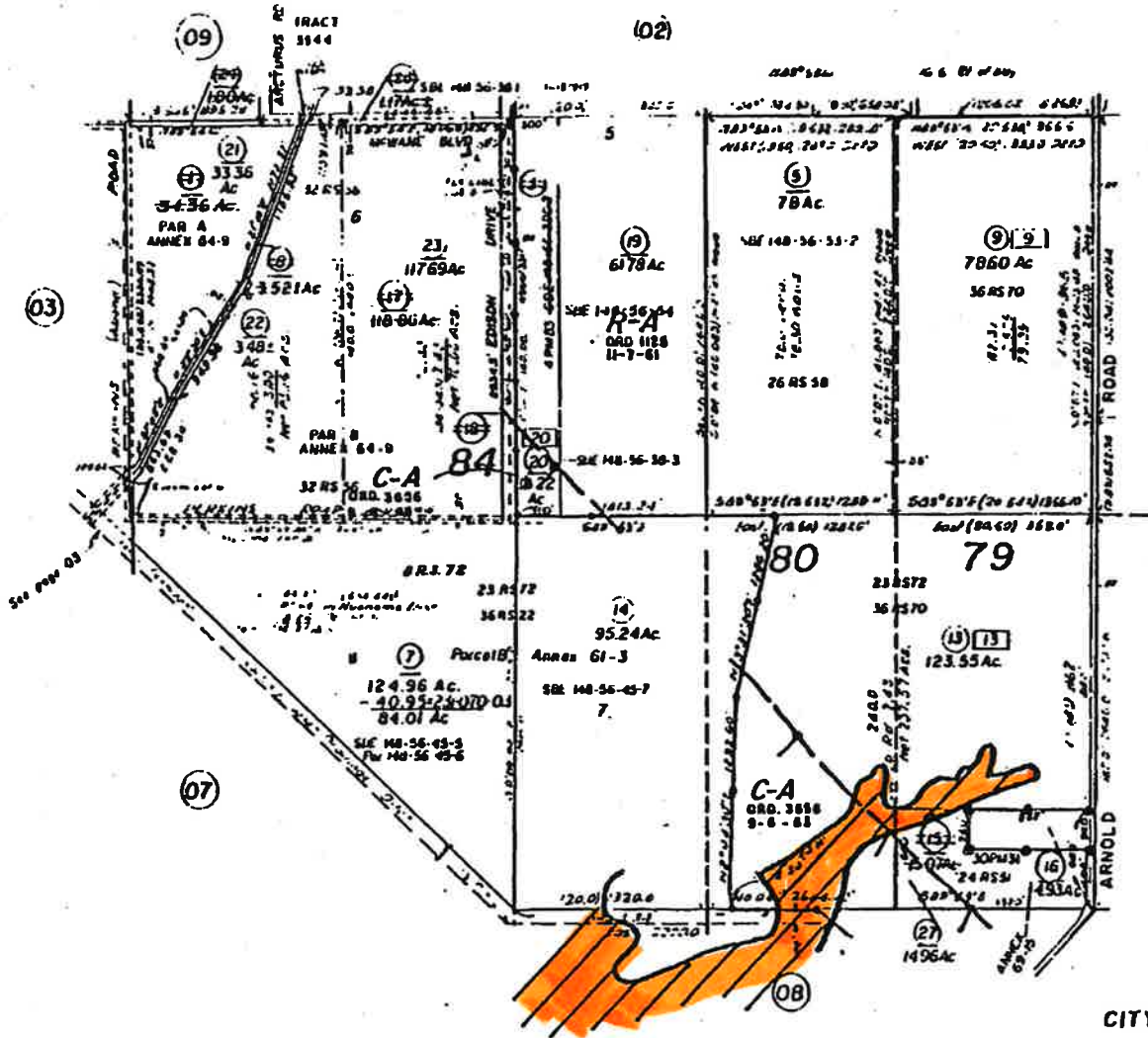
Hollywood By The Sea R.M. Bk 18, Pg. 22.

1301-TOT1

POR. SUBS 80 & 84, RANCHO EL RIO DE SANTA CLARA O' LA COLONIA

Tax Rate Area
 71006
 03011
 03026
 03030
 03043
 03062

231-04
 SEP 6 1981



Bk 232

VENTURA COUNTY PLANNING DEPARTMENT	
ZONE BOUNDARY	ZONING MAP 231-04
BOARD OF SUPERVISORS COUNTY OF VENTURA	
ORDINANCE 1658	ADOPTED 8-8-88
COUNTY CLERK	Robert L. Harms
By <i>Lynn Hillard</i> Deputy	

CITY OF OXNARD & VICINITY
 Assessor's Map Bk. 231 Pg. 04
 County of Ventura, Calif.

NOTE - ALL ELLIPSE PARCELS SHOWN ON THIS MAP
 ARE NOT TO BE CONSIDERED AS PARCELS UNLESS
 THEY ARE SHOWN WITH A PARCEL NUMBER IN A CIRCLE

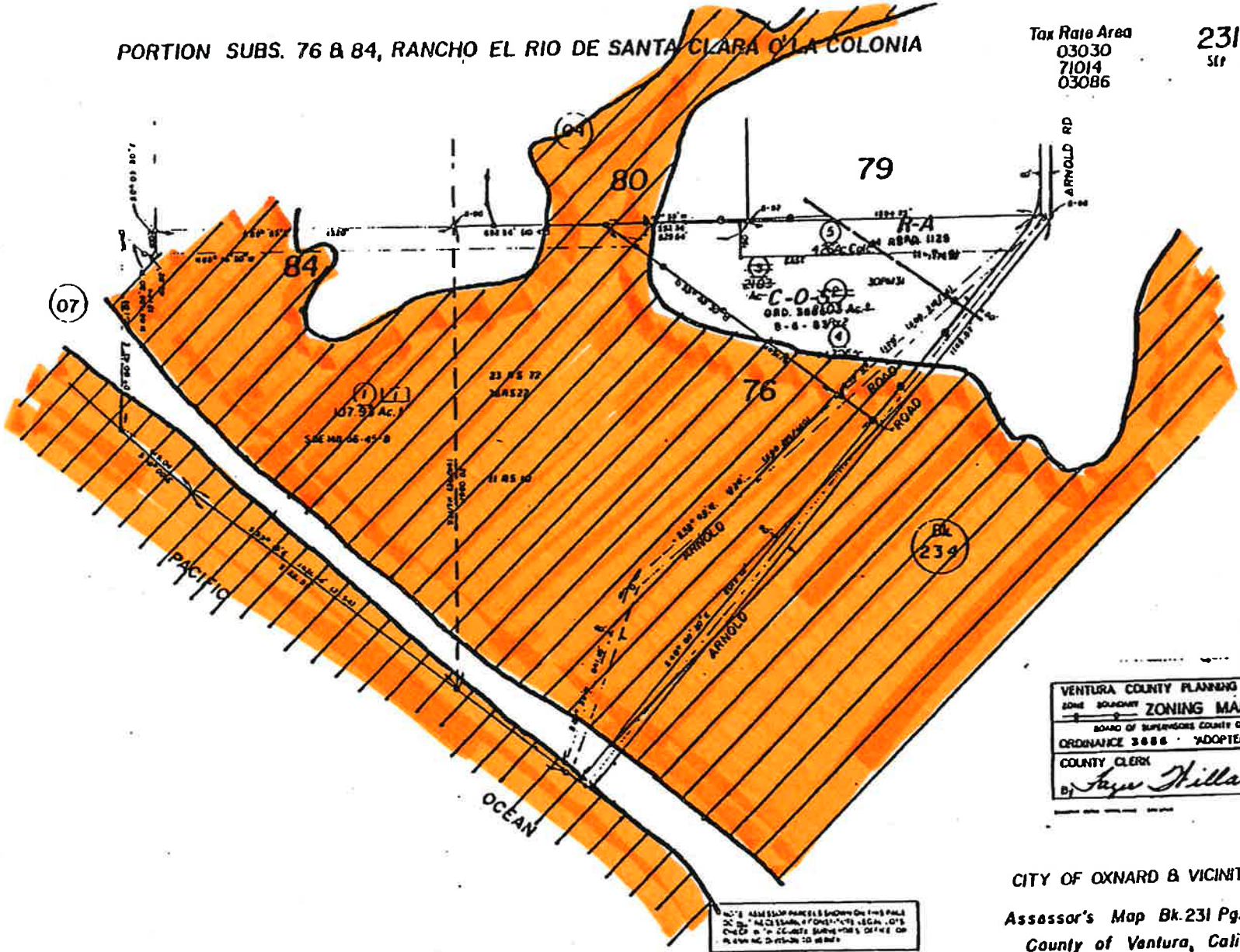
Re-Sub Ro Colonia, R.M. Bk. 3, Pg. 14

NOTE - Assessor's Block Numbers Shown in Ellipses
 Assessor's Parcel Numbers Shown in Circles

PORTION SUBS. 76 & 84, RANCHO EL RIO DE SANTA CLARA O LA COLONIA

Tax Rate Area
03030
71014
03086

231-08
S(1 4 M)



VENTURA COUNTY PLANNING DEPARTMENT	
ZONE BOUNDARY	ZONING MAP 231-08
BOARD OF SUPERVISORS COUNTY OF VENTURA	
ORDINANCE 3688 ADOPTED 8-6-63	
COUNTY CLERK	Robert L. Harris
By <i>Ray Hillard</i> Deputy	

CITY OF OXNARD & VICINITY
Assessor's Map Bk.231 Pg.08
County of Ventura, Calif.

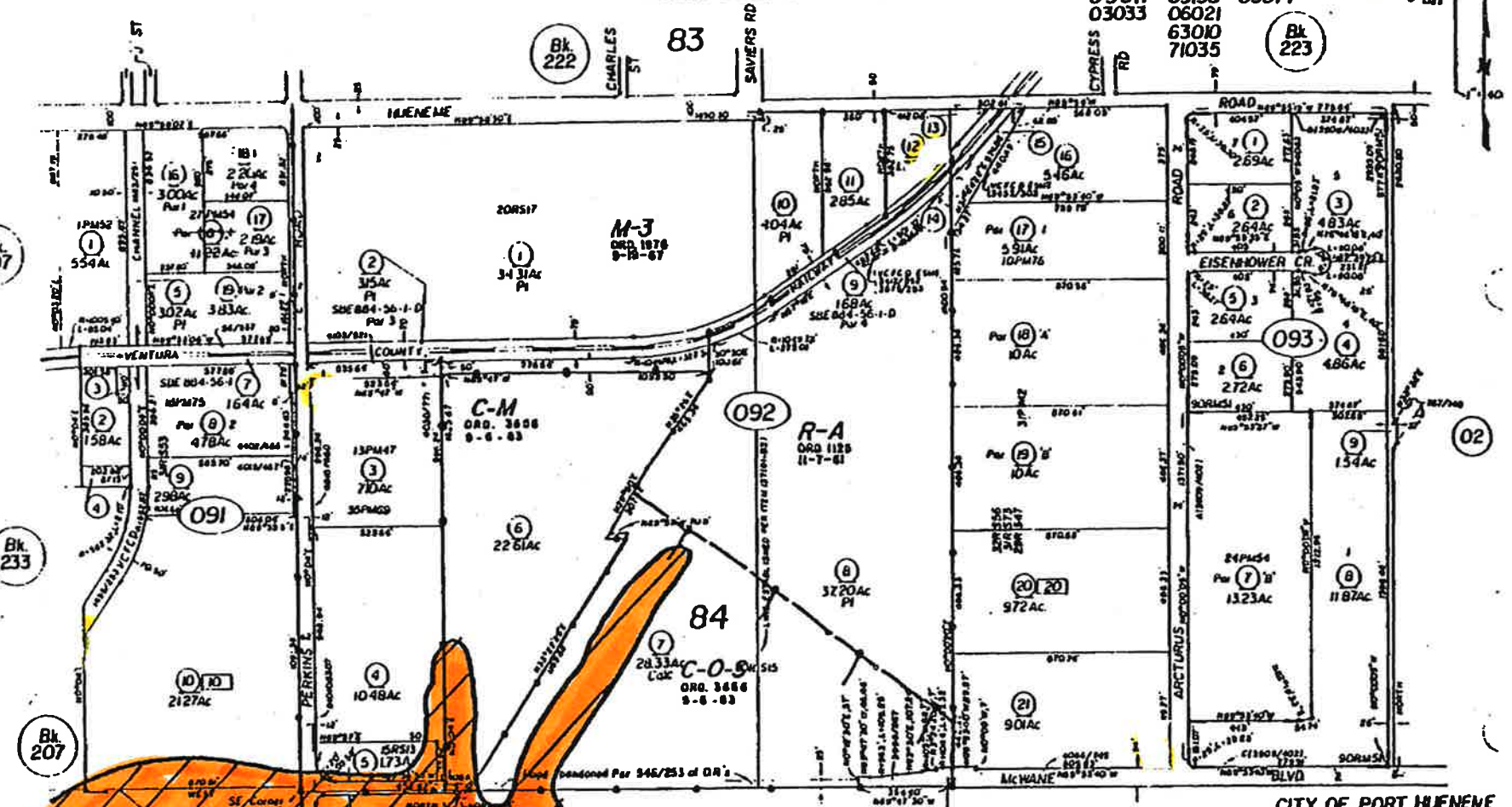
Re-Sub Rancho Colonia, R.M. Bk. 3, Pg. 14

NOTE - Assessor's Block Numbers Shown in Ellipses
Assessor's Parcel Numbers Shown in Circles

RANCHO EL RIO DE SANTA CLARA O'LA COLONIA
PORTION SUBDIVISION 84

Tax Rate Areas
03005 03072 03043
03011 03158 03071
03033 06021
63010
71035

231-09
SEP 6 1983



VENTURA COUNTY PLANNING DEPARTMENT
ZONING MAP 231-09
BOARD OF SUPERVISORS COUNTY OF VENTURA
ORDINANCE 3686 ADOPTED 9-6-83
COUNTY CLERK Robert L. Mason
By *Jays Willard* Deputy

CITY OF PORT HUENENE,
CITY OF OXNARD & VICINITY
Ventura County Assessor's Map

Assessor's Block Numbers Shown in Blue on Assessor's Parcel Numbers Shown in Green on Assessor's Acreage Numbers Shown in Red on

DRAWN	CHECKED
REDAWN BW	DATE 2-23-82
PRINTED BW	EFFECTIVE 9-6-83
PREVIOUS BK 23, PG. 01	

NOTE: ALL THESE PARCELS ARE SHOWN IN THIS PAGE TO SHOW THEIR LOCATION IN THE 100% LOT CHECK WITH COUNTY BLOCK MAPS. OTHER OF THIS MAP IS NOT SHOWN.

69-1011

234-12²³⁴⁻¹⁵

POR. RANCHO GUADALASCA

Tax Rate Area
71001
71010
71011
71024
71013
71032

Set 6 (10)

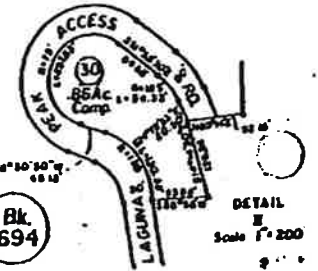


C-A
ORD. 3046
9-8-83

A-E
ORD. 2429
3-30-71

R-A-5Ac
ORD. 1699
8-20-60

C-O-S (M)
ORD. 3586
9-8-83



Bk. 694

VENTURA COUNTY PLANNING DEPARTMENT
ZONING MAP 234-12
BOARD OF SUPERVISORS COUNTY OF VENTURA
ORDINANCE 8888 ADOPTED 8-8-88
COUNTY CLERK Robert L. Howard
By *Richard Redington* Deputy

NOTE: ASSessor PARCELS & BOUNDARIES SHOWN ON THIS MAP DO NOT NECESSARILY REPRESENT LEGAL LOTS OR EXIST WITH COUNTY PLANNING OFFICE OR AGENCIES DIVISION TO VERIFY

Ra. Guadaluca, Pat. Bk. I Pg. 160
Broome Est. Rancho (unrec.) Sup. Ct. 5181
Ventura County Official Map OM Bk. 3, Pg. 65

Ventura County Assessor's Map.

Assessor's Block Numbers Shown in Ellipses
Assessor's Parcel Numbers Shown in Circles
Assessor's Acreal Numbers Shown in Squares

DRAWN REDRANN B. WILSON	CHECKED H.L.T.
MAKED B. WILSON	DATE 7-24-70
PREVIOUS BK.	EFFECTIVE ROLL
Compiled By Ventura County Assessor's Office	

U.S. HIGHWAY NO. 101-A

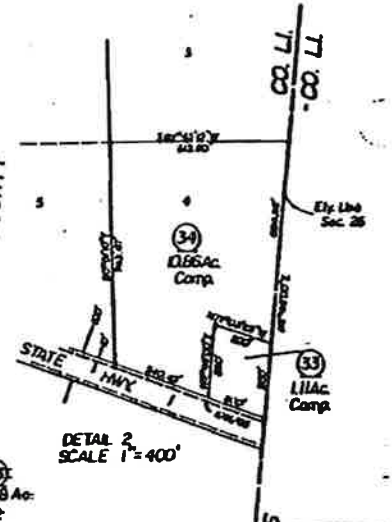
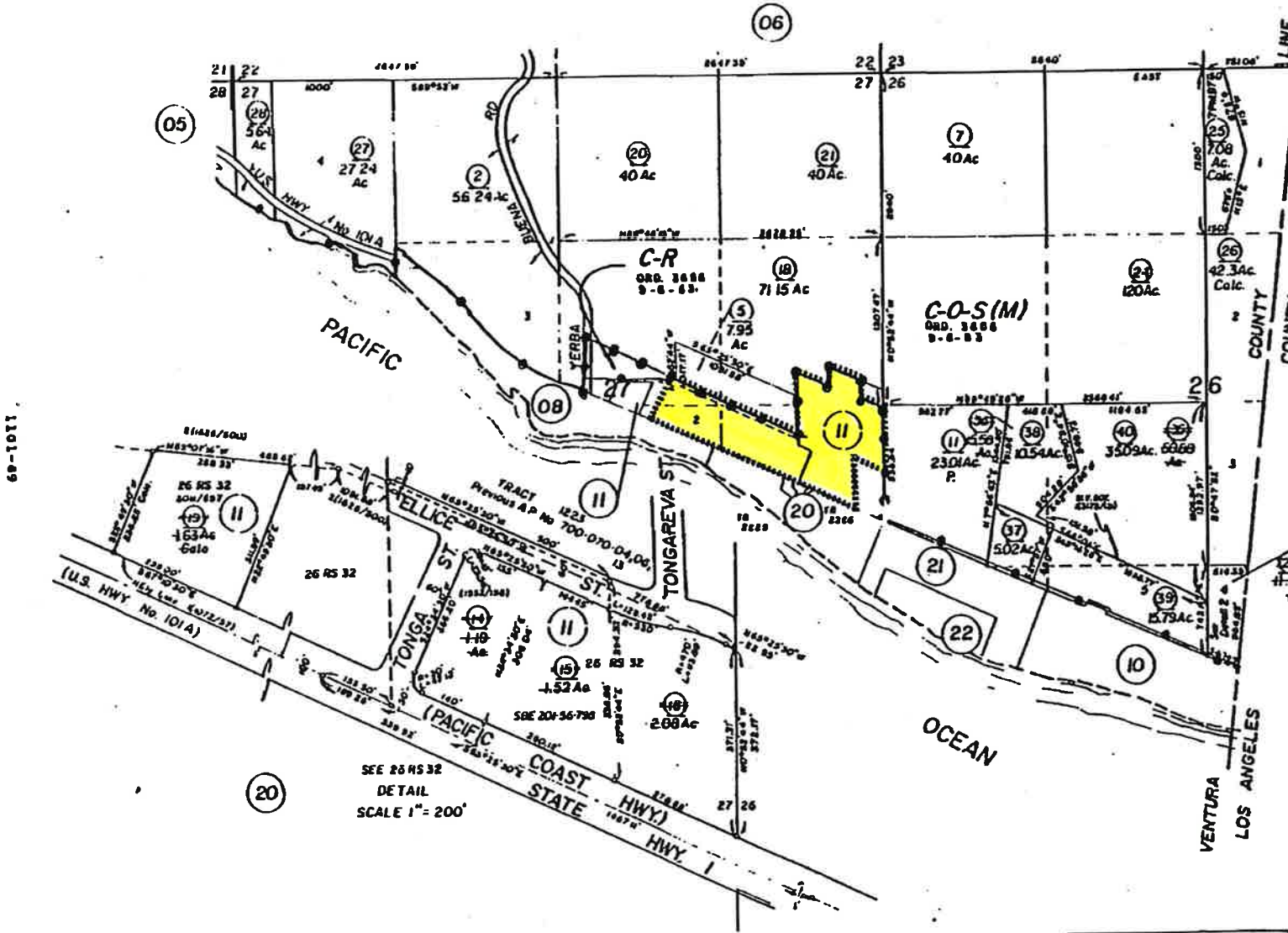
1700



SEC. 26 & 27 T.1S.,R.20W. S.B.B. & M.

Tax Rate Area
#001
71037

700-07
S.E.P. 6' W. 111



VENTURA COUNTY PLANNING DEPARTMENT
 ZONING MAP 700-07
 BOARD OF SUPERVISORS COUNTY OF VENTURA
 ORDINANCE 8668 ADOPTED 9-6-83
 COUNTY CLERK Robert L. Hemen
 By *Jayne Hilliard* Deputy

Ventura County Assessor's Map.

Assessor's Block Numbers Shown in Effigies
 Assessor's Parcel Numbers Shown in Circles
 Assessor's Acreage Numbers Shown in Squares

DRAWN	CHECKED
REDRAWN SB	DATE 10-29-74
INKED	EFFECTIVE 25-26 ROLL
PREVIOUS BK. 700 PG 07	
Compiled By Ventura County Assessor's Office	

NOTE: ASSessor'S BLOCK NUMBERS SHOWN ON THIS PAGE DO NOT NECESSARILY CONSTITUTE LEGAL LOTS UNLESS WITH COUNTY SUPERVISOR'S OFFICE OR PLANNING DIVISION TO VERIFY

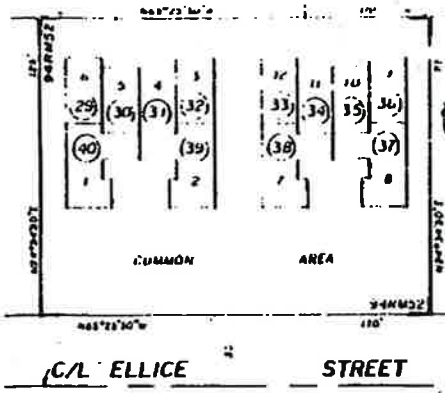
68-1011

700-11

Tax Rate Area
71021
71037

Slr 6 113

SECTION 27, T.1S., R.20W
S.B.B. & M.



Tract 3624, R.M. Bk 94, Pg 52
(Condo Plan 820090867)
Tract 1223, R.M. Bk 30, Pg. 82

NOTE
For further information pertaining to
Tract 3624 (Condo), see C.C.B.R.'s
per 820090868

NOTE: ALL LOTS AND PARCELS SHOWN ON THIS MAP
DO NOT HAVE COUNTY CONSTRUCTED LEGAL LOTS.
CHECK WITH COUNTY PLANNING OFFICE OR
A PROFESSIONAL SURVEYOR TO VERIFY.

VENTURA COUNTY PLANNING DEPARTMENT
ZONING MAP 700-11
BOARD OF SUPERVISORS COUNTY OF VENTURA
ORDINANCE 3686 ADOPTED 9-6-83
COUNTY CLERK Robert L. Harten
By *Saye Willard* Deputy

Ventura County Assessor's Map

Assessor's Block Numbers Shown in Red
Assessor's Parcel Numbers Shown in Green
Assessor's Acreal Numbers Shown in Blue

DRAWN	CHECKED
REDRAWN BY	DATE
INKED BY	EFFECTIVE DATE
PREVIOUS BK 700, PGS 07 & 11	
Compiled By Ventura County Assessor's Office	